



Croftdown Road, NW5

£500,000

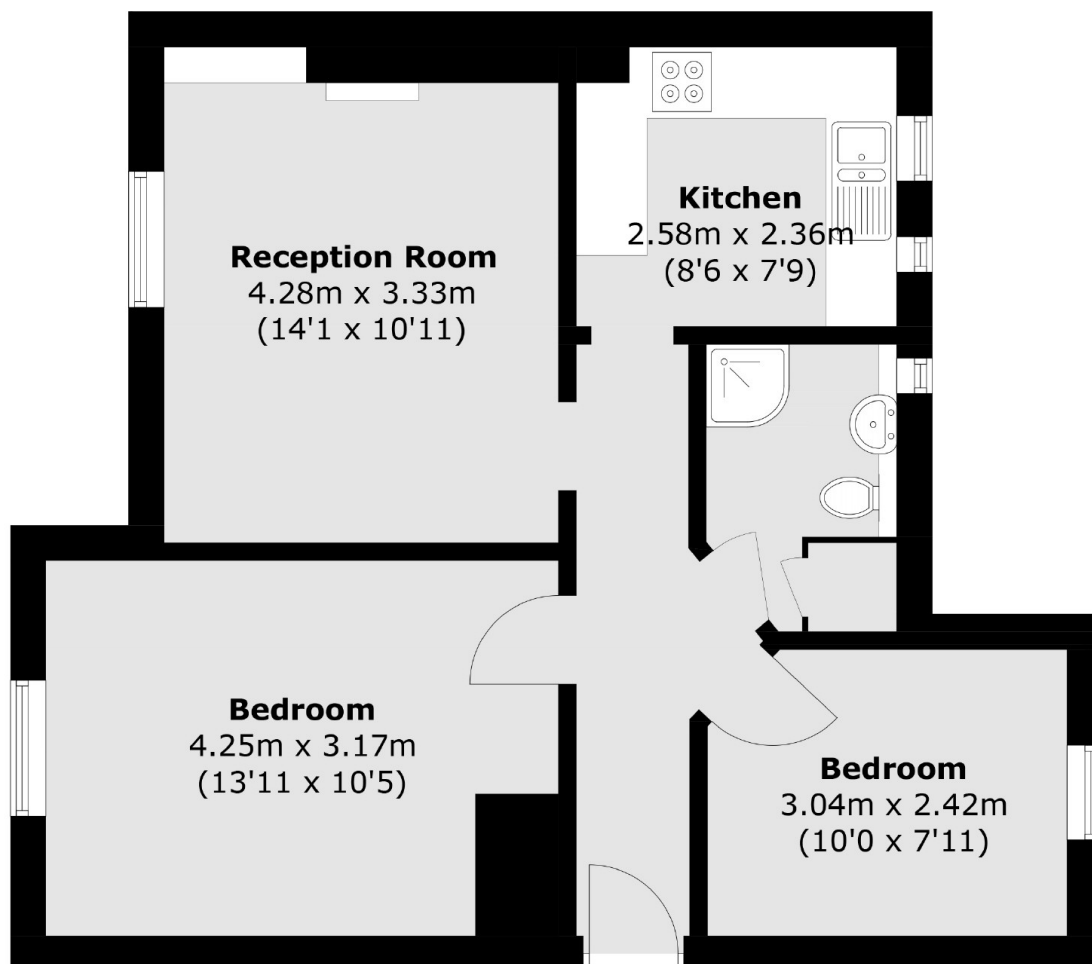
A lovely two bedroom property on one of Dartmouth Park's premium roads. The property has a large reception room with wooden floors and period features, a separate kitchen and access to a communal garden.

Croftdown Road is just moments away from the rolling acres of Hampstead Heath and is also close to the local shops, cafés and facilities on both York Rise and Swains Lane.

Features

- Two Bedrooms
- Period Features
- Wooden Floors
- Separate Kitchen
- Communal Garden
- Beautifully Presented

Croftdown Road, London, NW5



Total area (approx.): 53.3 sq. m (573.7 sq. ft)