



**Dartmouth Park Road, NW5**

**£5,000,000**

**Dexters**



## Dartmouth Park Road, NW5

A character-packed semi-detached Victorian family home with a stunning facade, superbly positioned on this prime residential turning in the heart of the highly sought after Dartmouth Park Conservation Area.

Entering the property on the raised ground floor, the hallway opens up to an extremely light open plan kitchen/living room with lateral proportions, wooden floors and high ceilings. The kitchen has a large island which blends nicely into the lounge area with a feature fireplace at the heart of the house. There are stairs down to a dining area with garden views through wall-to-wall glass bi-folding doors.

The lower ground floor has a huge open plan reception space, which leads onto the lower tier of the garden. There is a guest bedroom on this floor with a twin en suite. Additionally, there is a large utility room with a dog grooming station and an external door to the front of the property. On the upper floors are three good-sized bathrooms and five spacious bedrooms. The principal bedroom is extremely wide, with two large windows and fitted storage.

The property is ideally placed to take full advantage of not only the open acres of Hampstead Heath, but also the local restaurants and cafés on Swain's Lane. Tufnell Park and Gospel Oak stations are both nearby.

### Features

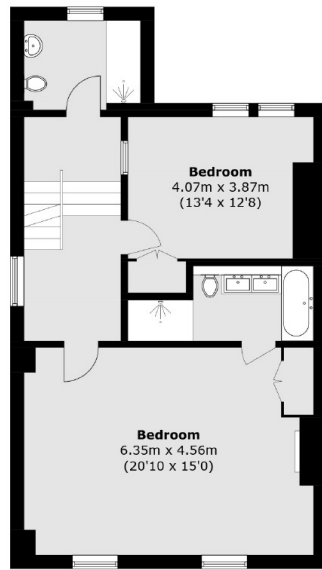
- Six Bedrooms
- Premium Road
- Original Features
- Semi-Detached
- South Facing Garden
- Fantastic Entertaining Space



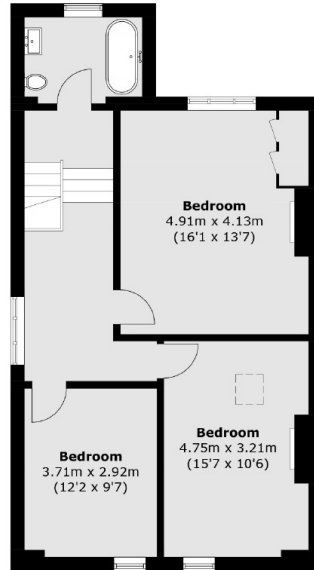




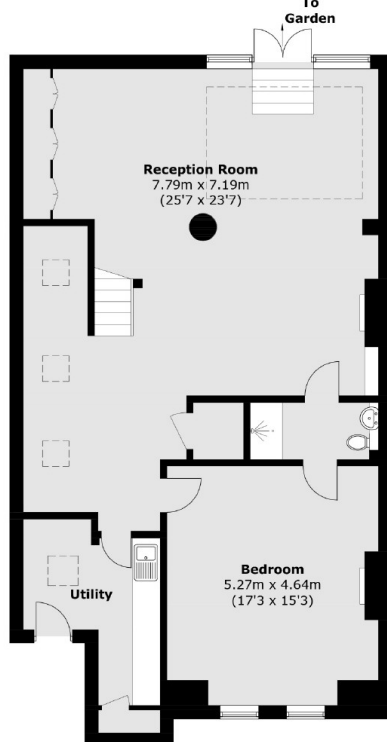
# Dartmouth Park Road, London, NW5



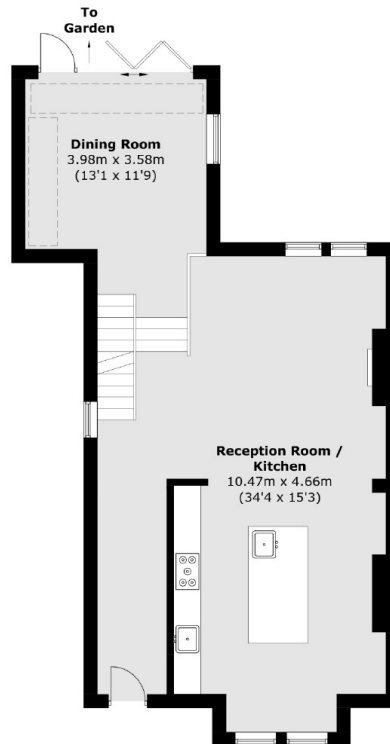
**First Floor**



**Second Floor**



**Lower Ground Floor**



**Ground Floor**

Total area (approx.): 318.1 sq. m (3,424.0 sq. ft)