



Dartmouth Park Road, NW5

£1,200,000

Situated on one of Dartmouth Park's most sought after roads, a three double bedroom flat in superb decorative order, set in a detached corner property, beautifully restored to its original Victorian state.

Dartmouth Park Road is a quiet tree-lined avenue of Victorian villas. Hampstead Heath and Parliament Hill Fields, with their panoramic views over London, are within half a mile.

Features

- Three Double Bedrooms
- Reception Room
- Bathroom
- En Suite Shower
- Open Plan Kitchen
- Split-Level



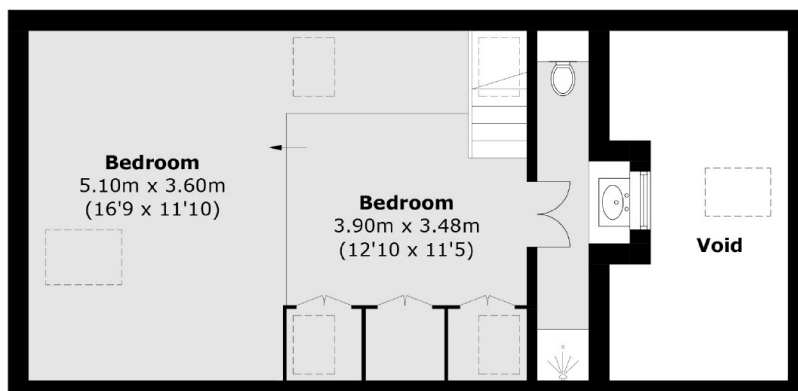
Dartmouth Park Road, NW5

On the second floor of this detached Victorian house you have two bedrooms, a bathroom and an open plan kitchen/reception room.

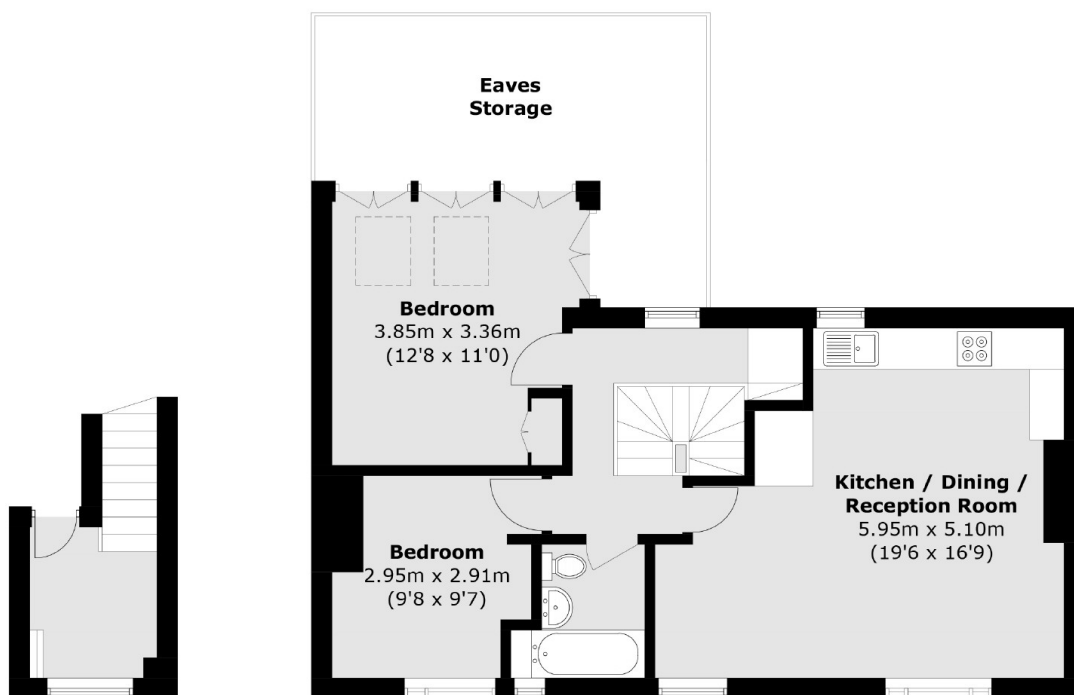
Leading up the stairwell onto the third floor you will find the principal bedroom. The property is finished to a high standard with modernised features and underfloor heating throughout.



Dartmouth Park Road, London, NW5



Third Floor



First Floor

Second Floor

Total area (approx.): 109.6 sq. m (1,179.7 sq. ft)
(Excluding Eaves Storage & Void)