



Middleton Grove, N7

£775,000

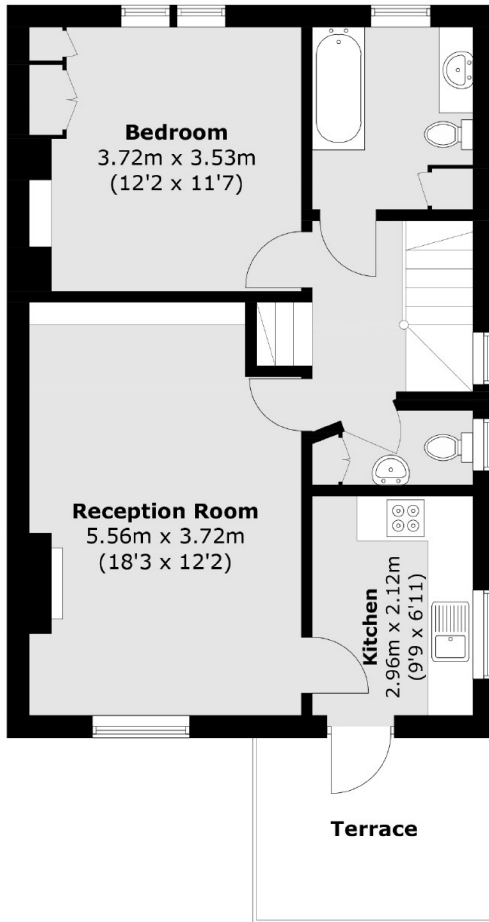
A well-presented three bedroom apartment, arranged over the top two floors of a terraced Victorian house. This property is decorated to a good standard throughout and offers an east facing roof terrace and a shared garden.

Middleton Grove is a residential road with direct routes to Camden Town, Kings Cross/St Pancras and Coal Drops Yard shopping complex. Caledonian Road station (Piccadilly line) is within half a mile.

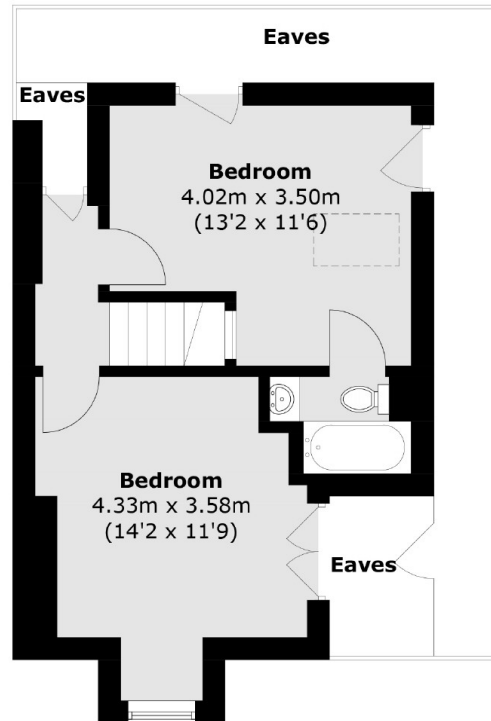
Features

- Three Bedrooms
- Private Roof Terrace
- Separate Kitchen
- Share of Freehold
- Good Transport Links
- Chain Free

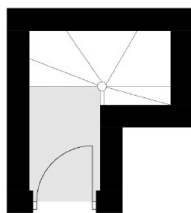
Middleton Grove, London, N7



Second Floor



Third Floor



First Floor

Total area (approx.): 91.5 sq. m (985.0 sq. ft)
Terrace area (approx.): 7.7 sq. m (82.9 sq. ft)
(Excluding Eaves)