



Marlborough Road, N19

£450,000

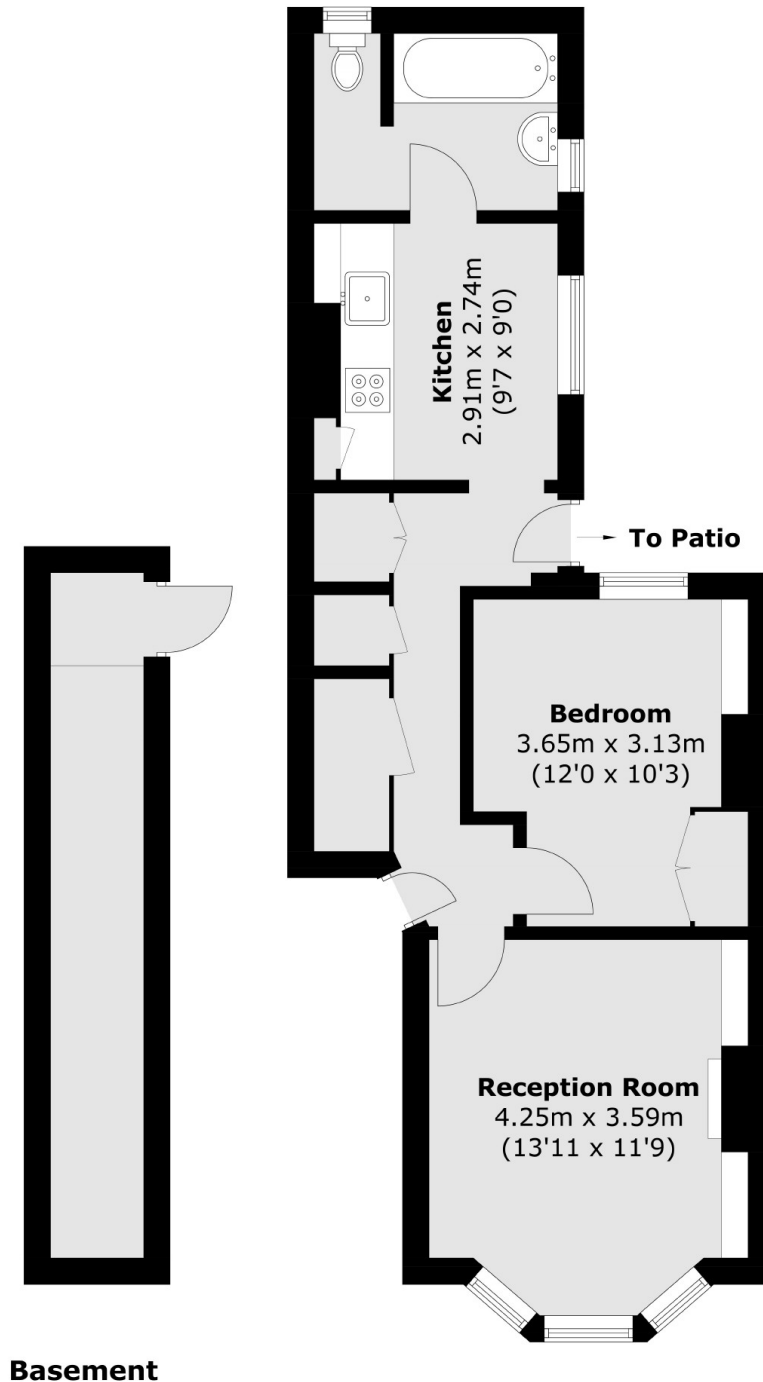
A beautifully presented one bedroom ground floor flat with a private patio garden. This property has a stunning reception room with a feature fireplace, a separate kitchen and wooden floors throughout.

Marlborough Road is tree-lined with easy access to local shops, cafés and restaurants. The property is within half a mile of both Archway and Upper Holloway stations, and moments from Whittington Park.

Features

- Private Patio
- Residential Road
- Wooden Floors Throughout
- Close to Local Amenities
- Good Transport Links
- Victorian Conversion

Marlborough Road, London, N19



Total area (approx.): 49.7 sq. m (535.0 sq. ft)
(Excluding Basement)