



## Axminster Road, N7

£375,000

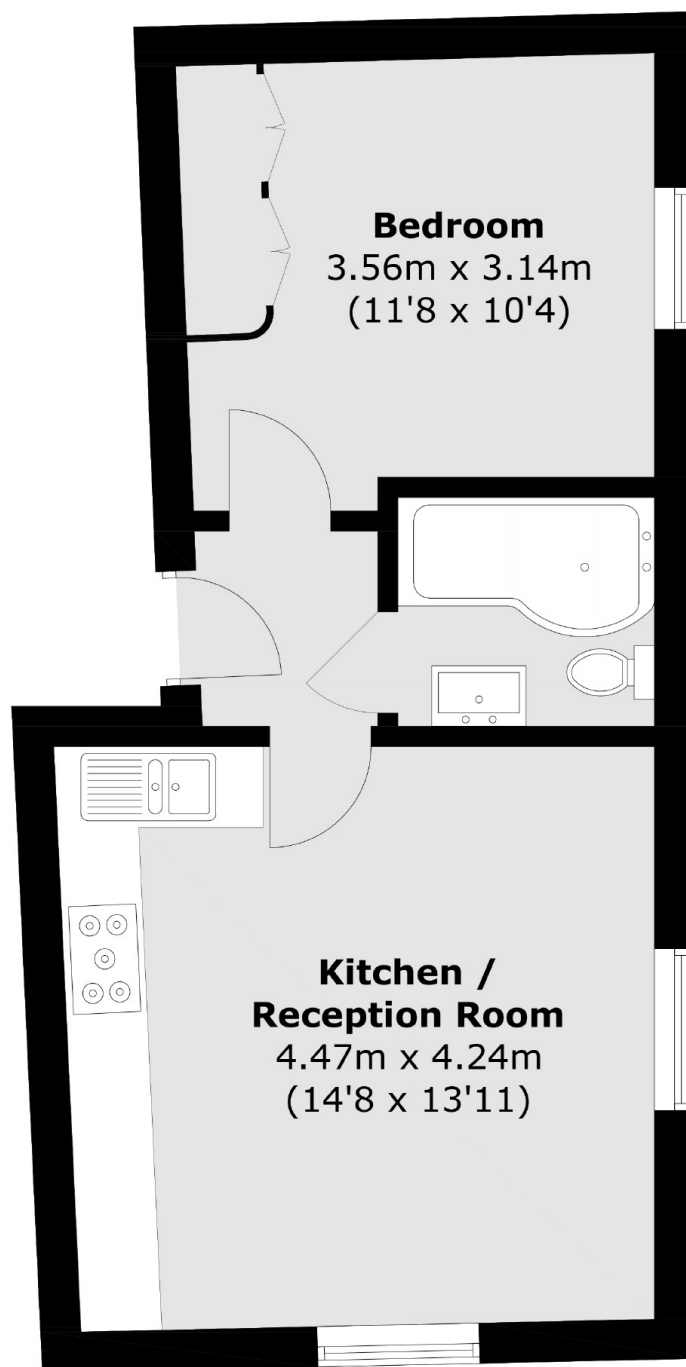
A very well-presented upper floor flat with stunning natural light. The property offers a spacious double bedroom and a large open plan kitchen and reception room, all finished to an extremely good standard.

Axminster Road is tree-lined with easy access to local shops, cafés and restaurants. The property is within half a mile of both Archway and Upper Holloway stations, and moments from Whittington Park.

### Features

- Great Transport Links
- Double Bedroom
- Dual Aspect Lounge
- Chain Free
- Excellent Condition
- Long Lease

# Axminster Road, London, N7



Total area (approx.): 36.4 sq. m (391.8 sq. ft)