

## Tufnell Park Road, N7

£550,000

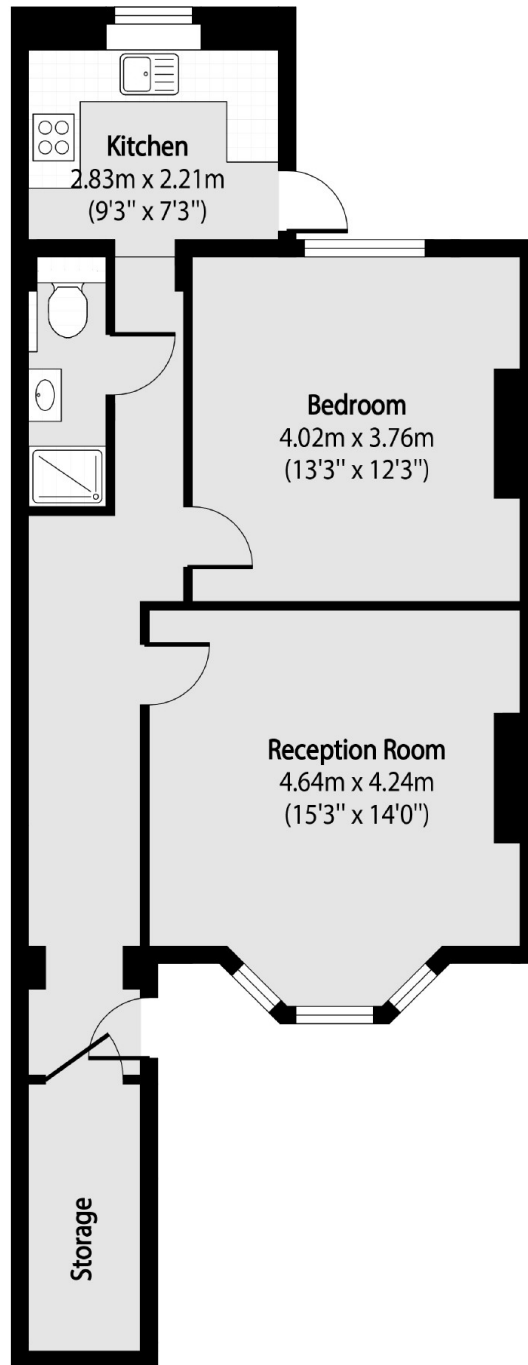
A well-presented one bedroom apartment in an imposing Victorian townhouse. This property has a large reception room, a separate kitchen and a large double bedroom with views out onto a private patio garden.

Located in the heart of Tufnell Park and close to the many shops, restaurants and cafés on both Fortess Road and Holloway Road. Tufnell Park underground station (Northern line) is at the end of the road.

### Features

- Victorian Conversion
- Private Section of Garden
- Long Lease
- Excellent Condition
- Large Reception Room
- Good Transport Links

# Tufnell Park Road, London, N7



Total area (approx): 59.93 sq m (645 sq. ft)