



## Dartmouth Park Road, NW5

### £1,100,000

Situated on one of Dartmouth Park's most sought after streets, a two double bedroom, first floor apartment in a detached corner property, beautifully restored to its original Victorian state.

Dartmouth Park Road is a quiet tree-lined avenue of Victorian villas. Hampstead Heath and Parliament Hill Fields, with their panoramic views over London, are less than a five minute walk away.

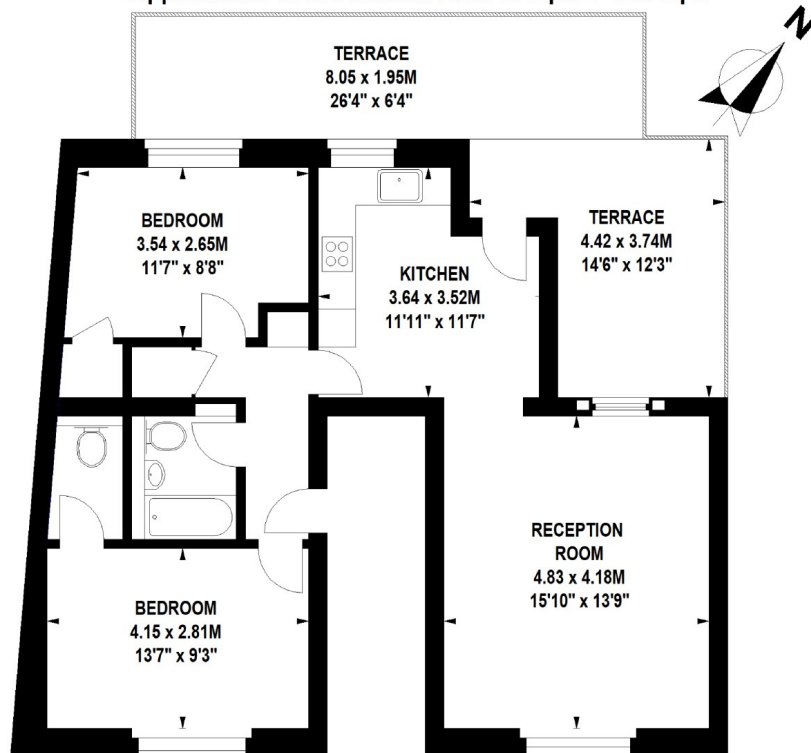
### Features

- Two Double Bedrooms
- Reception Room
- Kitchen/Breakfast Room
- Bathroom
- En Suite Shower
- Roof Terrace

# Dartmouth Park Road, London, NW5

## Dartmouth Park Road, NW5

Approximate Gross Internal Area 69 sq m / 743 sq ft



### First Floor

Floor Plan produced for Private by Mays Floorplans © . Tel 020 3397 4594  
Illustration for identification purposes only, not to scale  
All measurements are maximum, and include wardrobes and window bays where applicable