



## Giesbach Road, N19

£600,000

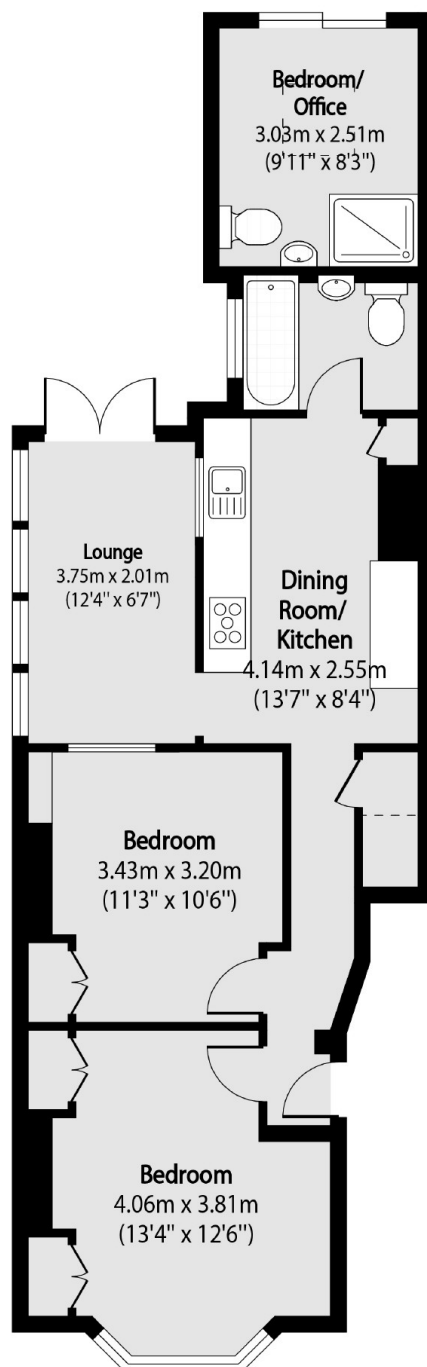
Set in a wonderful Victorian building with high ceilings and period features, a well-presented two bedroom flat with a lovely secluded garden. This flat also has two bathrooms, a separate annexe and is offered chain free.

Giesbach Road is a quiet tree-lined road and is well-located for multiple shopping and transport facilities, including Archway tube (Northern line) and Upper Holloway station (Overground).

### Features

- Two Double Bedrooms
- Two Bathrooms
- Private Decked Garden
- Victorian Conversion
- Separate Annexe
- Hardwood Flooring

# Giesbach Road, London, N19



Total area (approx): 61.76 sq m (665 sq. ft)