



Brookfield Park, NW5

£2,100,000

Set on a highly sought after road in the heart of the Dartmouth Park Conservation Area, an attractive Edwardian family home with three double bedrooms and two bathrooms

The house occupies a fantastic position, only moments from the rolling acres of Hampstead Heath, Waterlow Park and Highgate Cemetery, with the charming street cafés of Swains Lane and Highgate Village beyond.

Features

- Three Double Bedrooms
- South West Facing Garden
- Potential To Extend STPP
- Off Street Parking
- Semi Detached
- Separate Kitchen



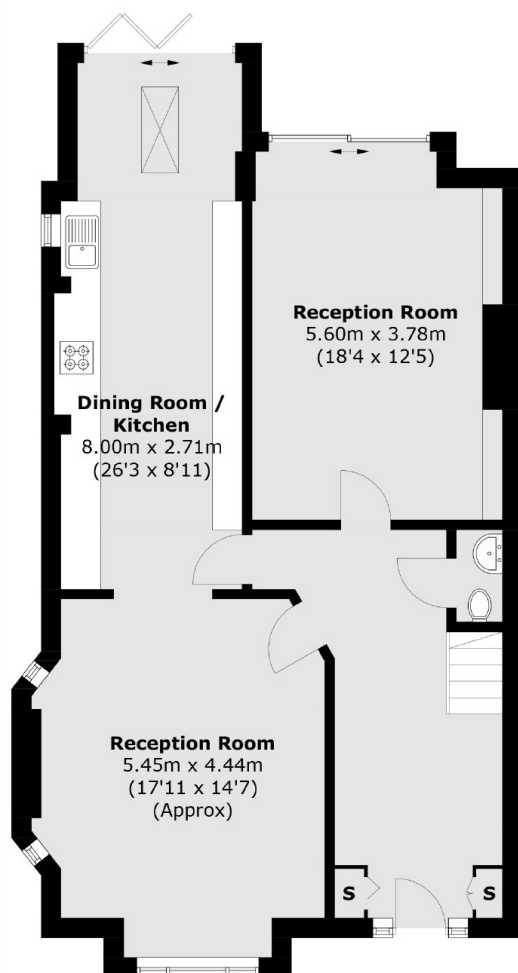
Brookfield Park, NW5

With solid Herringbone wood flooring, this well-presented property enjoys spacious accommodation arranged over two floors. The ground floor provides an excellent entertaining space, featuring two generous reception rooms and a large kitchen/dining room with patio doors which open directly to a secluded south west facing patio and garden.

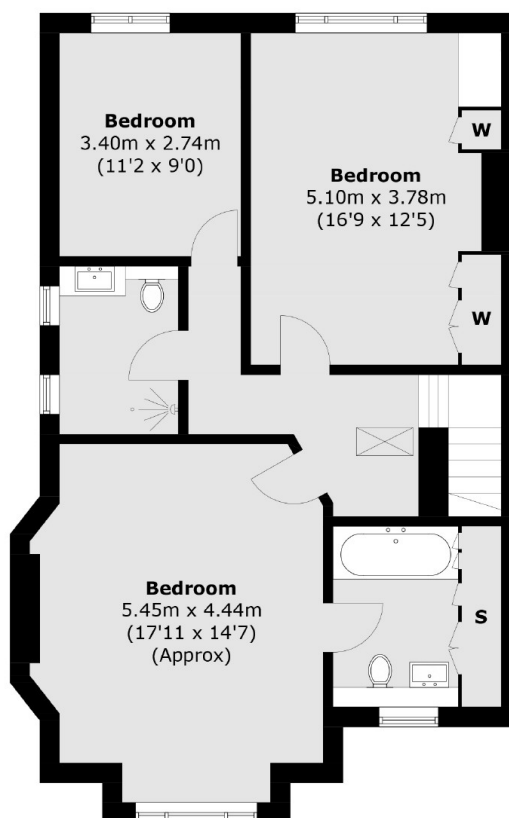
There are three spacious bedrooms on the first floor, as well as a contemporary family bathroom with bathtub. The principal bedroom has a characterful bay window and an en suite bathroom.



Brookfield Park, London, NW5



Ground Floor



First Floor

Total area (approx.): 158.8 sq. m (1,709.3 sq. ft)