



Manor Gardens, N7

£495,000

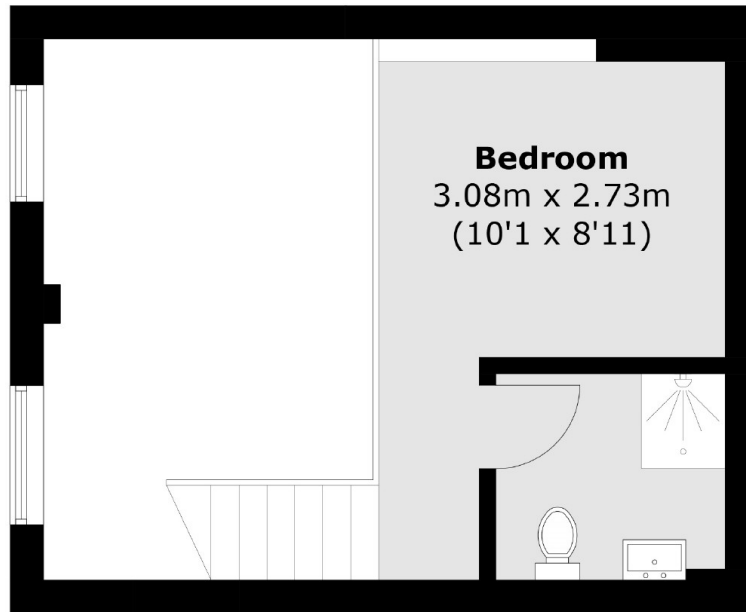
A split-level apartment situated in this impressive building with excellent services. This apartment offers an open plan reception room/kitchen, characterful wood flooring and a large bedroom.

The Beaux Arts Building has an impressive entrance lobby and is within a mile of Holloway Road station, Finsbury Park station, Archway station and Upper Holloway overground station.

Features

- Wood Flooring
- Split-Level
- Share of Freehold
- Communal Gardens
- Private Gym
- Shared Rooftop Terraces

Manor Gardens, London, N7



Mezzanine



Ground Floor

Total area (approx.): 46.0 sq. m (495.1 sq. ft)
(Including Mezzanine / Excluding Void)