



Anson Road, N7

£775,000

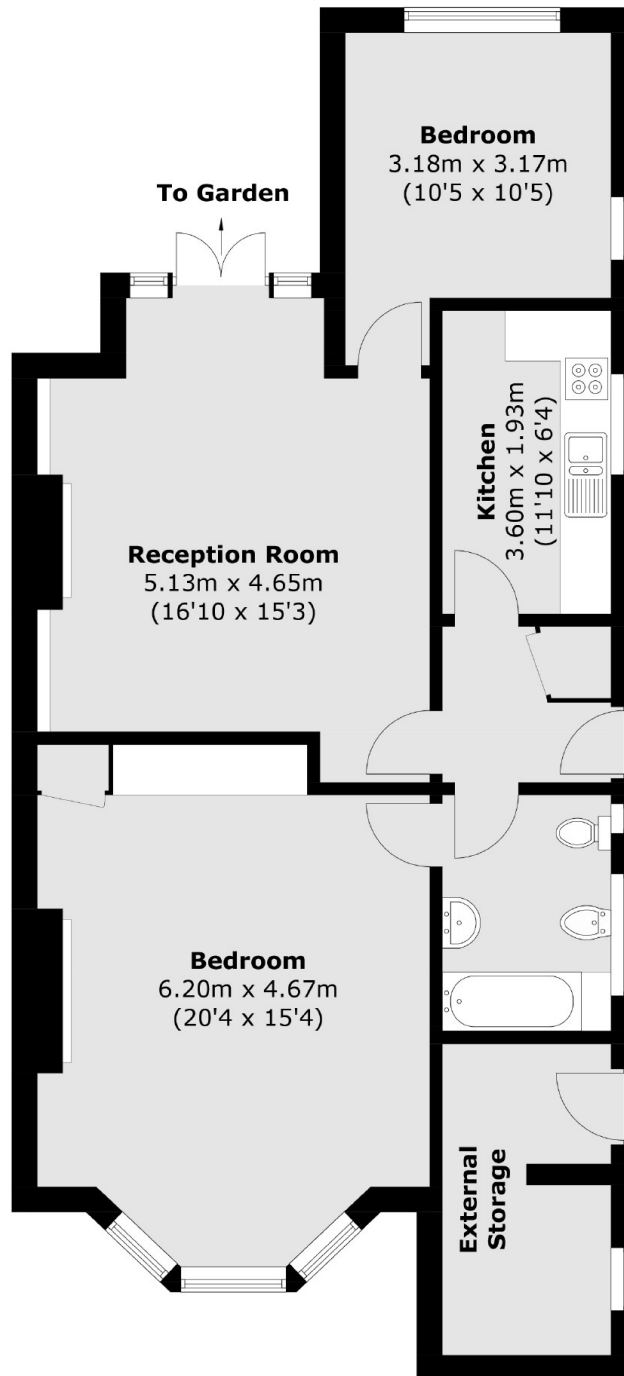
A characterful two bedroom garden flat set in a semi-detached Victorian conversion, benefitting from a separate kitchen, a large reception room and a private patio with direct access to a shared, south-facing garden.

Anson Road is a sought after tree-lined road within half a mile of Tufnell Park tube (Northern line) and within a mile of Kentish Town station (Northern line & Thameslink) and Caledonian Road tube (Piccadilly line).

Features

- Share of Freehold
- Two Bedrooms
- Victorian Conversion
- Private Entrance
- Private Patio
- Large Shared Garden

Anson Road, London, N7



Lower Ground Floor

Total area (approx.): 79.1 sq. m (851.4 sq. ft)
External Storage area (approx.): 7.5 sq. m (80.7 sq. ft)