



**Tytherton Road, N19**

**£1,350,000**

**Dexters**





## Tytherton Road, N19

Forming part of this hugely impressive church conversion on tree-lined Tytherton Road and approached via its own private entrance, a stunning three bedroom church conversion in excellent condition, with beautiful original features flowing throughout the property.

On the ground floor, the double height reception room retains an original stone pillar and high-brick arched windows with french doors leading to a sunny, mature private garden. Off the reception is a spacious kitchen with underfloor heating and a stunning architectural arch. There is also a recently renovated bathroom on this floor. The oak floors were resanded and sealed in 2023.

On the upper two floors, again with original brick arch windows, leaded glass and exposed timber beams, there are three sunny double bedrooms. The principal bedroom, with an en suite shower room, is on the top floor.

Tytherton Road is ideally placed for easy access to Tufnell Park tube station (Northern line Zone 2) and the diverse range of independent shops on Fortress Road and Campdale Road. The property is moments from Yerbury Primary School.

### Features

- Three Double Bedrooms
- Double Ceiling Height
- Secluded Private Garden
- Private Entrance
- Stunning Character
- Off-Street Parking







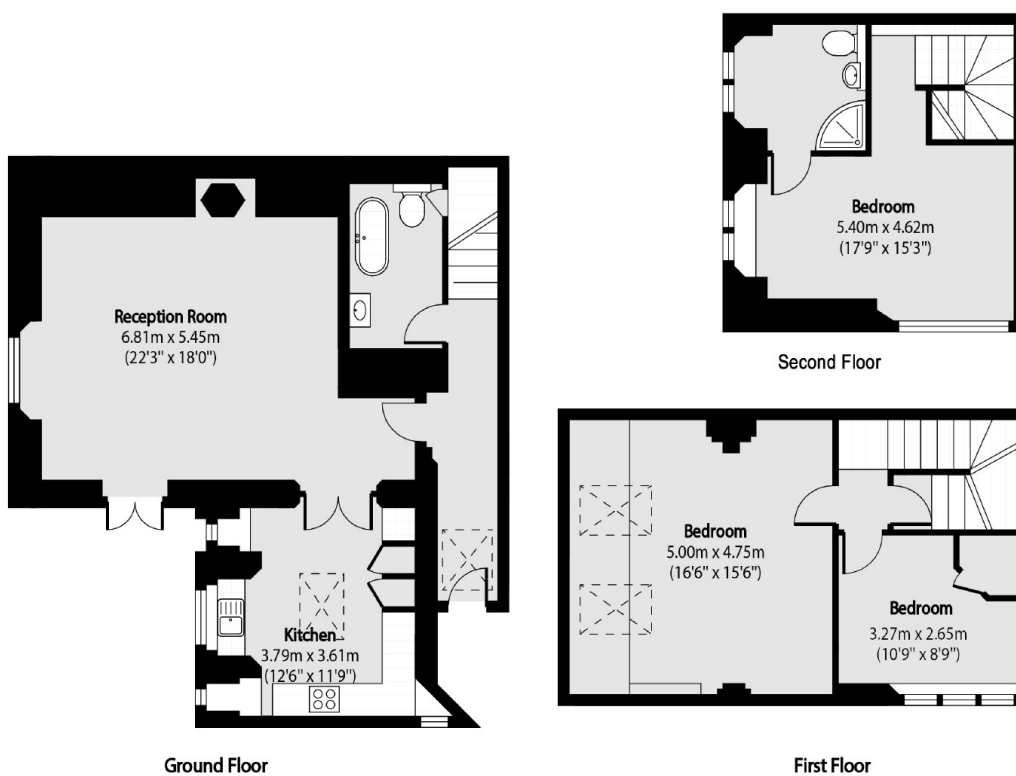








# Tytherton Road, London, N19



Total area (approx): 125.72 sq m (1353 sq. ft)