



Tabley Road, N7

£650,000

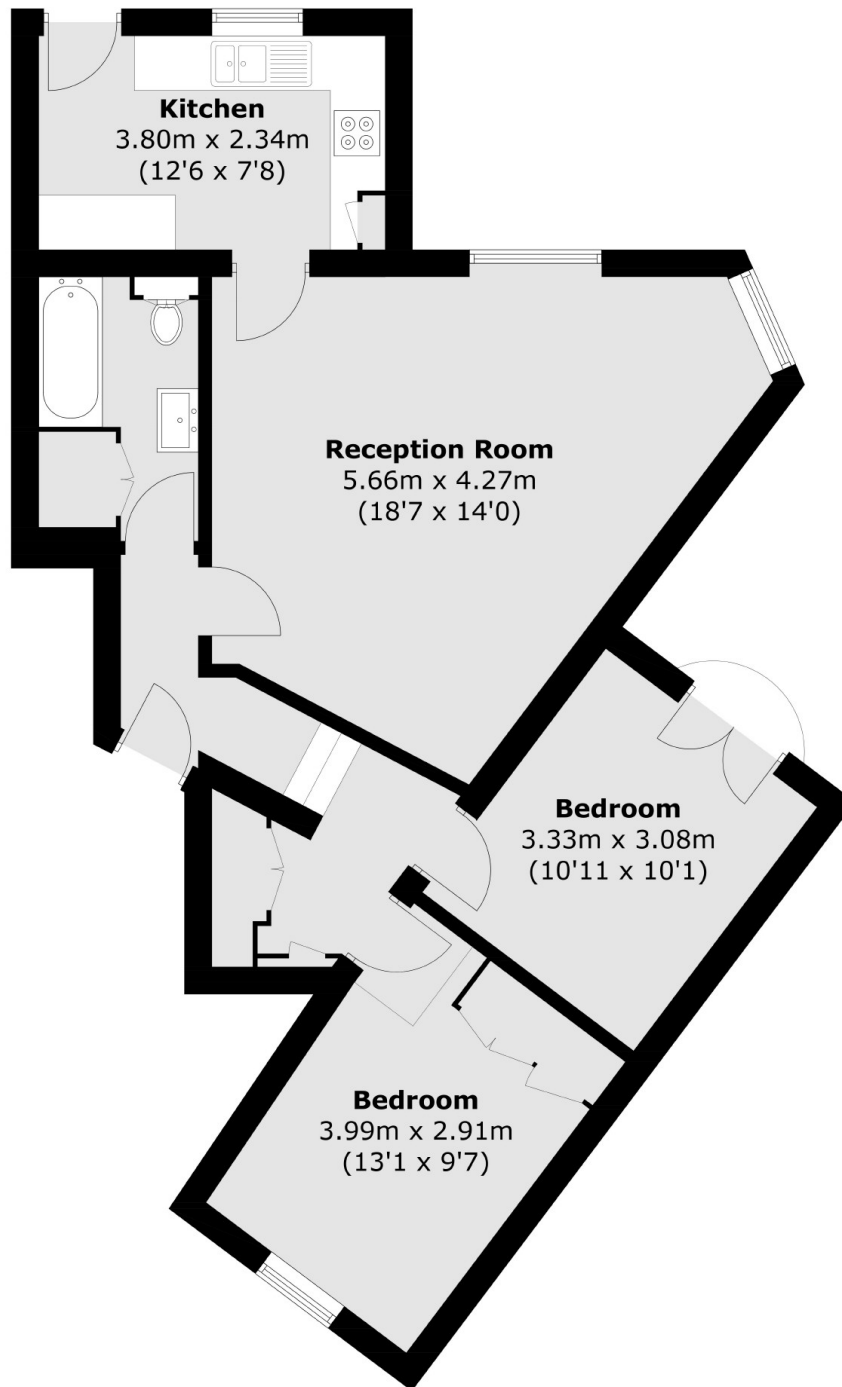
A beautifully presented split-level two double bedroom flat with a private garden. Set within a Victorian terraced house, this share of freehold property has a popular layout, with the garden directly off the kitchen and the spacious reception room.

Tabley Road is a peaceful residential street well-placed on the eastern reaches of Tufnell Park, with Holloway Road station (Piccadilly line) and Tufnell Park station (Northern line) within walking distance.

Features

- Two Double Bedrooms
- Separate Kitchen
- Split-Level
- Private Garden
- Share of Freehold
- Victorian Conversion

Tabley Road, London, N7



Total area (approx.): 72.1 sq. m (776.1 sq. ft)