



Marlborough Road, N19

£450,000

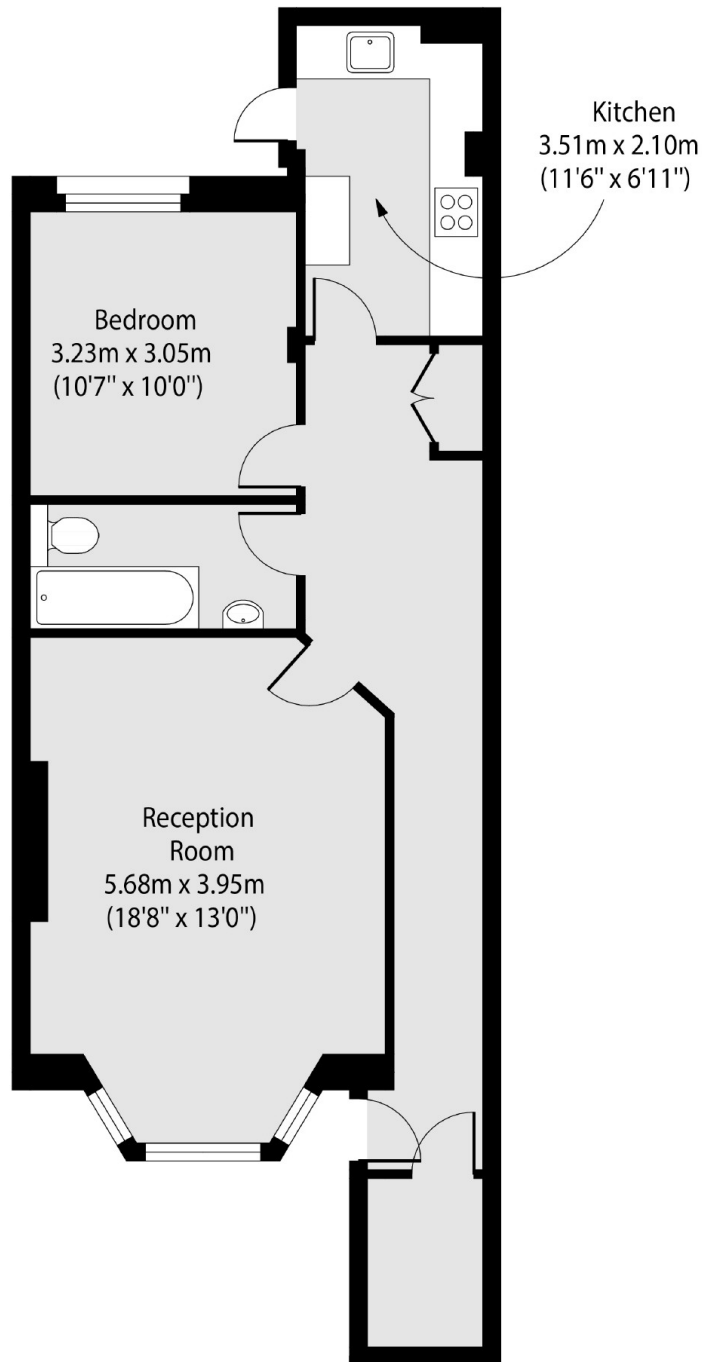
A very well-presented lower ground floor flat with a private entrance. This property offers a spacious double bedroom, a reception room, a private garden and period features throughout.

Marlborough Road is tree-lined with easy access to local shops, cafés and restaurants. The property is within half a mile of both Archway and Upper Holloway stations, and moments from Whittington Park.

Features

- Share of Freehold
- Private Garden
- Great Transport Links
- Double Bedroom
- Private Entrance
- Chain-Free

Marlborough Road, London, N19



Total area (approx): 59.04 sq m (636 sq. ft)