



Arco Walk, The Arches, NW5 £1,600,000

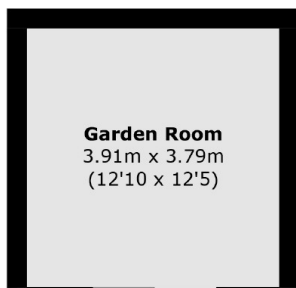
This house features three double bedrooms along with an additional study/fourth bedroom, a kitchen with a separate utility room and a large reception room that seamlessly flows out to the terraced garden and garden room.

Arco Walk is moments from Hampstead Heath, with over 700 acres of wild parkland and some of the most spectacular views in the city. The development is also close to the boutiques, bakeries and cafés on Swains Lane.

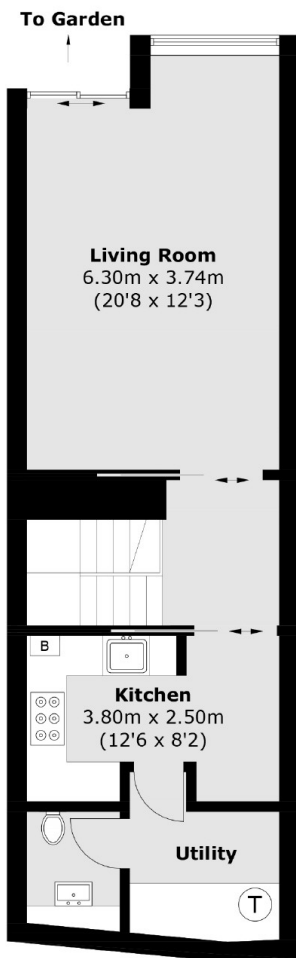
Features

- Three Bedrooms
- Super 'Green' Living
- Efficient Energy Rating
- Additional Garden Room
- High Specification
- Build Complete

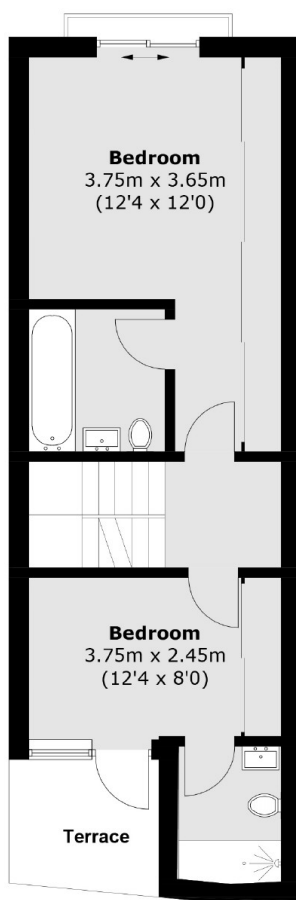
Arco Walk, The Arches, London, NW5



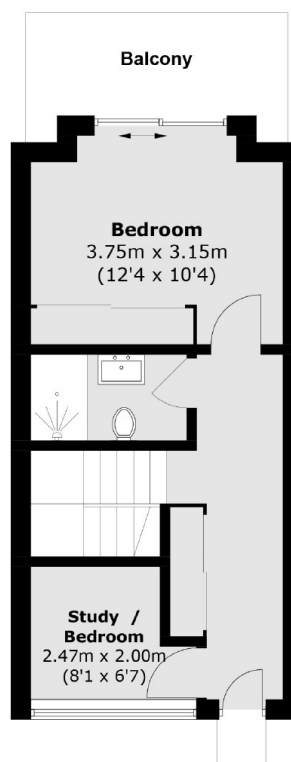
(Not Shown In Actual
Location / Orientation)



Lower Ground Floor



Ground Floor



Upper Ground Floor

Total area (approx.): 124.0 sq. m (1,334.7 sq. ft)

Garden Room: 14.8 sq. m (159.3 sq. ft)

Total Including Garden Room: 138.8 sq. m (1,494 sq. ft)

Terrace / Balcony area: 11.0 sq. m (118.4 sq. ft)