



Tytherton Road, N19

£950,000

A stunning upper maisonette set in a red-brick Victorian house. This property offers four bedrooms, two bathrooms, a large reception room, a separate kitchen and a south east facing balcony.

Tytherton Road is located off Campdale Road, in close proximity to Tufnell Park (Northern line) and close to local bus services, shops, cafés, Yerbury Primary School and Tufnell Parking playing fields.

Features

- Share of Freehold
- Private Balcony
- Four Bedrooms
- Period Conversion
- Premium Road
- Great Transport Links



Tytherton Road, N19

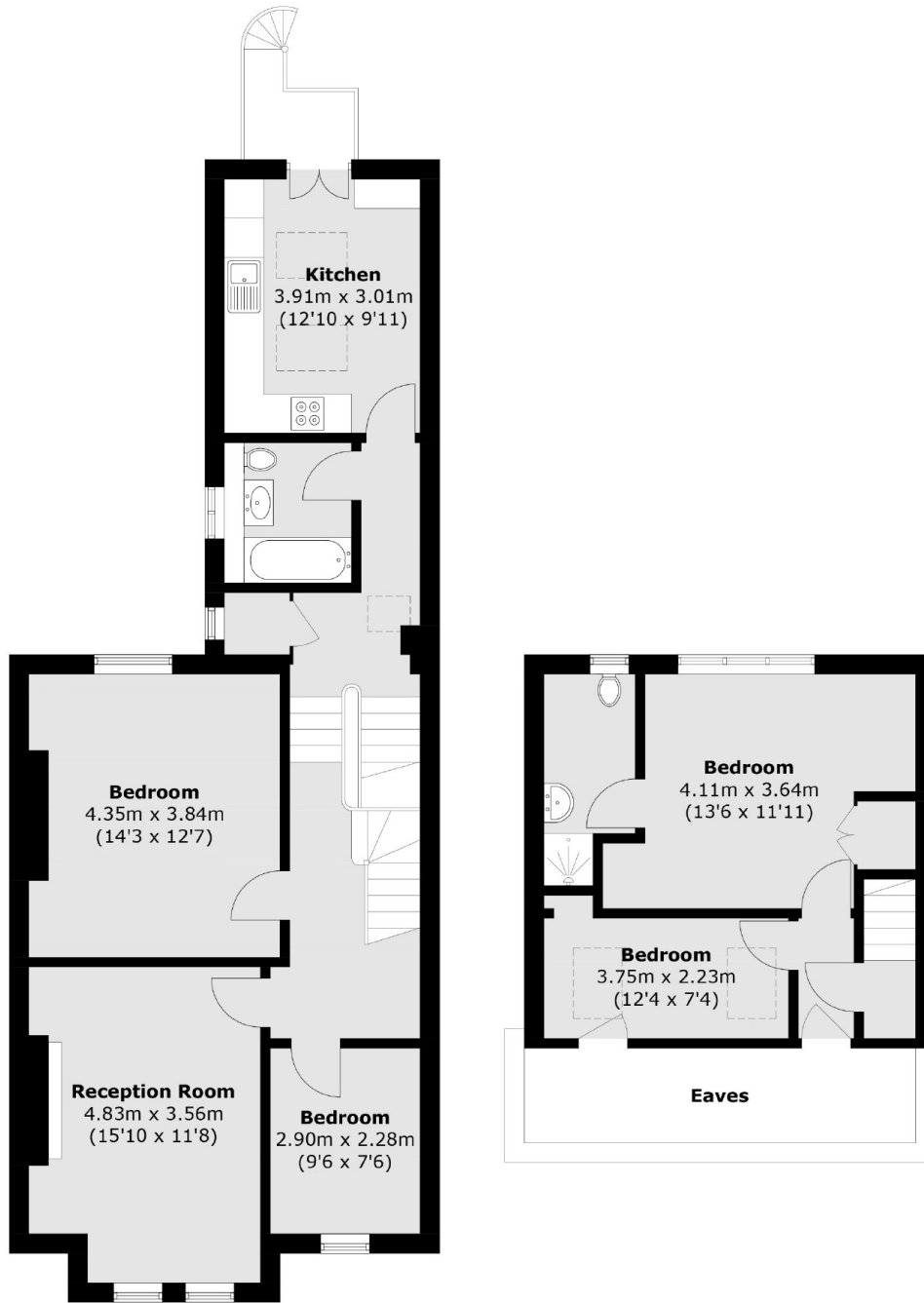
Up the first flight of stairs on the half landing of the first floor, you will find a family bathroom and a separate eat-in kitchen, with direct access to the south east facing balcony. This floor also offers ample storage space which is currently used as a utility cupboard.

Moving towards the front of the property, on the first floor are two bedrooms, one being a double, and a large reception room with original Victorian features and wooden floors throughout.

The second floor floor consists of two further bedrooms, one of these bedrooms is en suite and both have plenty of storage.



Tytherton Road, London, N19



First Floor

Second Floor

Total area (approx.): 108.4 sq. m (1,166.8 sq. ft)
(Excluding Eaves)