

Tufnell Park Road, N7

£400,000

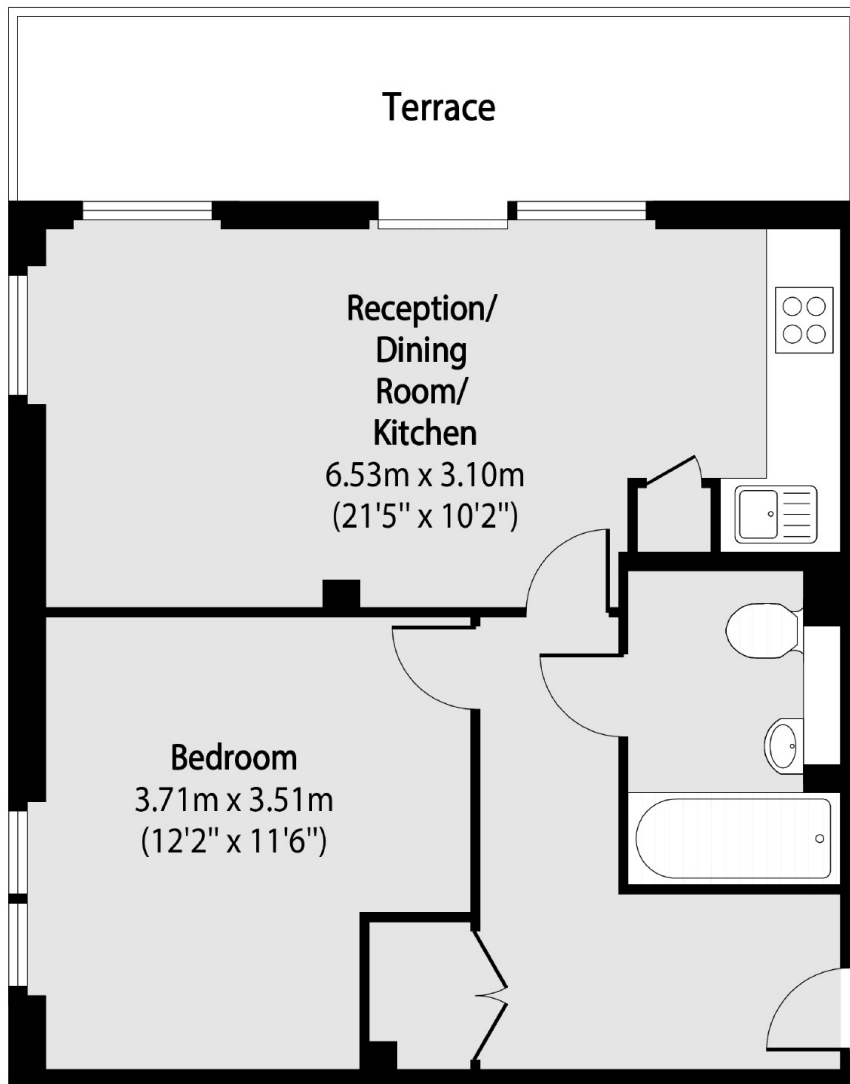
A large one bedroom apartment set in a modern block. This spacious home has a south facing open plan reception room/kitchen, a private balcony, and is in excellent condition throughout.

Tufnell Park Road is a perfect location for multiple transport links and is close to the numerous independent shops, restaurants and cafés of Fortress Road and Holloway Road.

Features

- Great Condition
- Modern Block
- Private Balcony
- Kitchen/Living Area
- Double Bedroom
- Chain-Free

Tufnell Park Road, London, N7



Total area (approx): 46.73 sq m (503 sq. ft)

Terrace total area (approx): 10.03 sq m (108 sq. ft)