



## Cornwallis Road, N19

£650,000

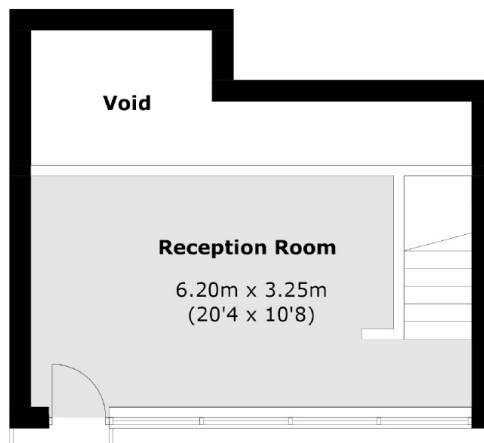
A two bedroom split-level apartment with its own private entrance. This property has a large open plan reception room/kitchen, a mezzanine floor offering a second reception or a space for a third bedroom, a private garden and is in good condition throughout.

Cornwallis Road is located close to Archway station (Northern line), Holloway Road station (Piccadilly line) and Upper Holloway (overground). A wide range of shops, cafés and restaurants can be found nearby on Holloway Road

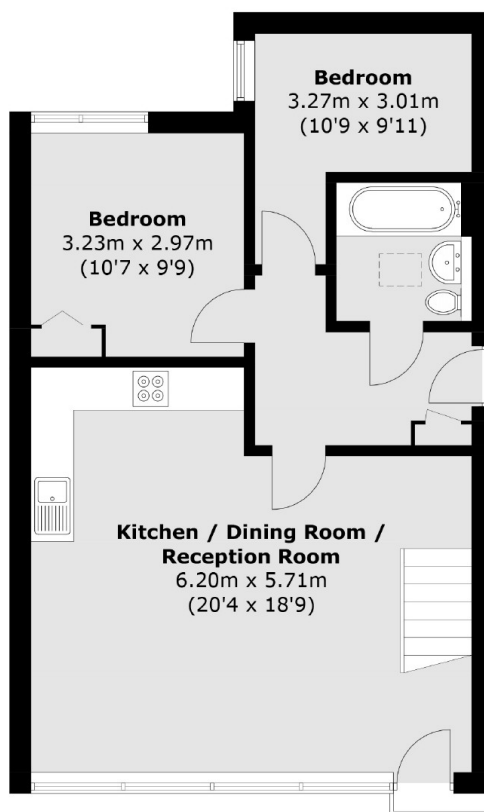
### Features

- Two Bedrooms
- Private Entrance
- Private Garden
- Large Communal Garden
- Great Transport Links
- Off-Street Parking

# Cornwallis Road, London, N19



**First Floor**



**Ground Floor**

Total area (approx.): 80.6 sq. m (867.6 sq. ft)