

## Mercers Mews, N19

£1,200,000

A stunning split-level apartment, situated in the heart of Tufnell Park. This property has three double bedrooms, a private terrace and is in superb decorative order throughout.

Mercers Road is ideally located for easy access to Tufnell Park station (Northern line) and the eclectic selection of local shopping facilities along Fortress Road and Holloway Road.

### Features

- Three Bedrooms
- Gated Mews
- Private Entrance
- Private Terrace
- Great Condition
- Split-Level





## Mercers Mews, N19

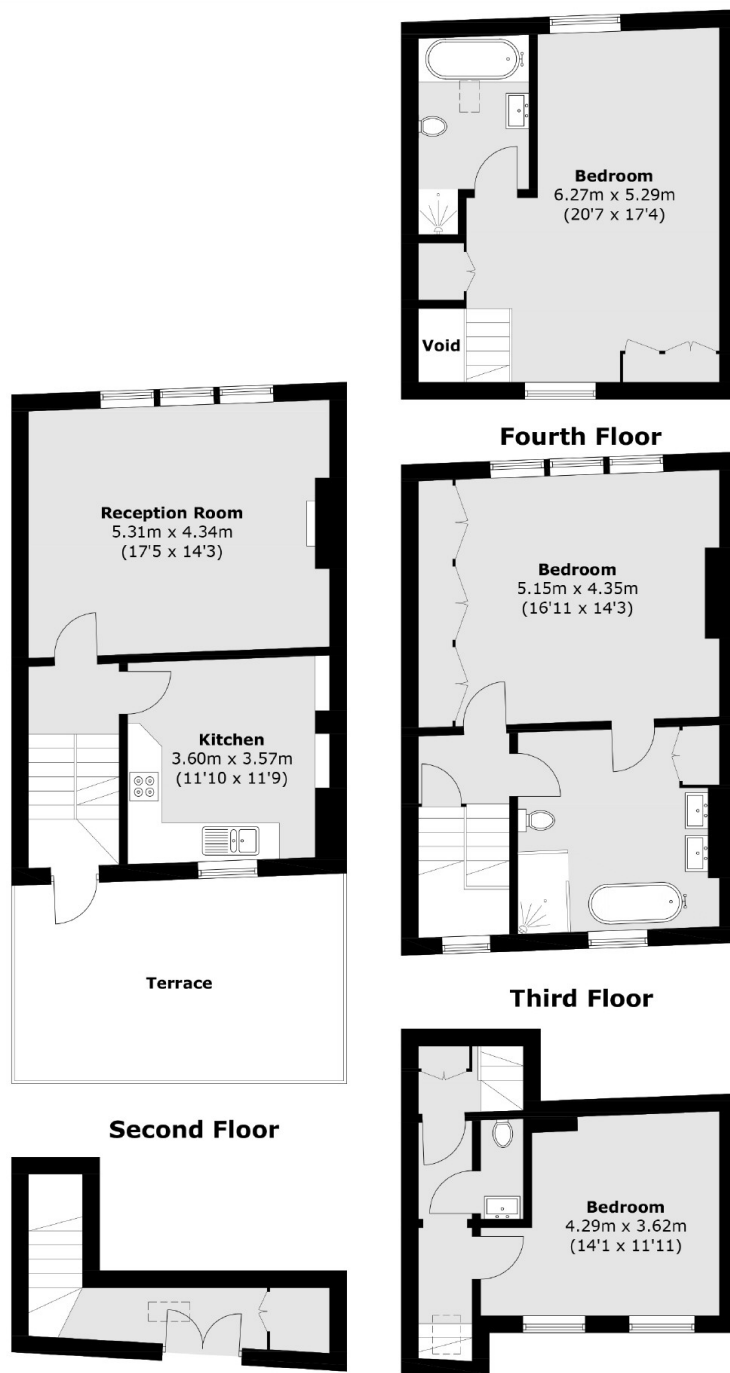
Leading through the main door and up the stairwell brings you to the first of three bedrooms. On the second floor is a stunning reception room with a feature fireplace and parquet flooring. Also on this floor is a private terrace and a large separate kitchen, with room for a dining table.

Occupying the entire third floor is the principal bedroom with a large en suite and built-in wardrobes. The fourth floor offers another en suite double bedroom filled with lots of natural light. This property is also in the catchment area for the Ofsted outstanding rated Yerbury Primary School.





# Mercers Mews, London, N19



**Ground Floor**                      **First Floor**  
Total area (approx.): 146.0 sq. m (1,571.5 sq. ft)  
(Excluding Void)  
Terrace (approx.): 20.5 sq. m (220.7 sq. ft)