

Tollington Way, N7

£400,000

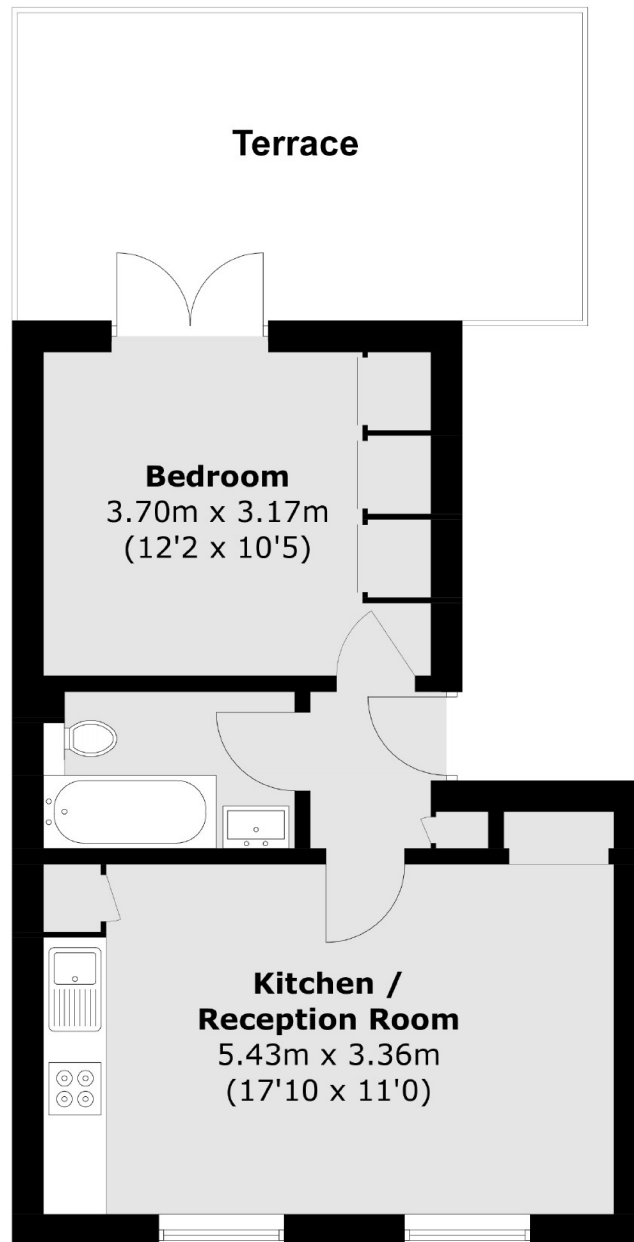
A very well-presented one bedroom flat in a Victorian conversion. The property offers an open plan kitchen/living area, a bathroom and a large bedroom with access to a lovely private terrace.

Tollington Way is a quiet residential street in close proximity to a superb selection of shops, cafés and transport links on nearby Holloway Road, Stroud Green and Crouch End.

Features

- Share of Freehold
- Private Roof Terrace
- Double Bedroom
- Great Transport Links
- Recently Renovated
- Open Plan Kitchen/Diner

Tollington Way, London, N7



Second Floor

Total area (approx.): 37.6 sq. m (404.7 sq. ft)
Balcony: 15.9 sq. m (171.1 sq. ft)