



## Duncombe Road, N19

£350,000

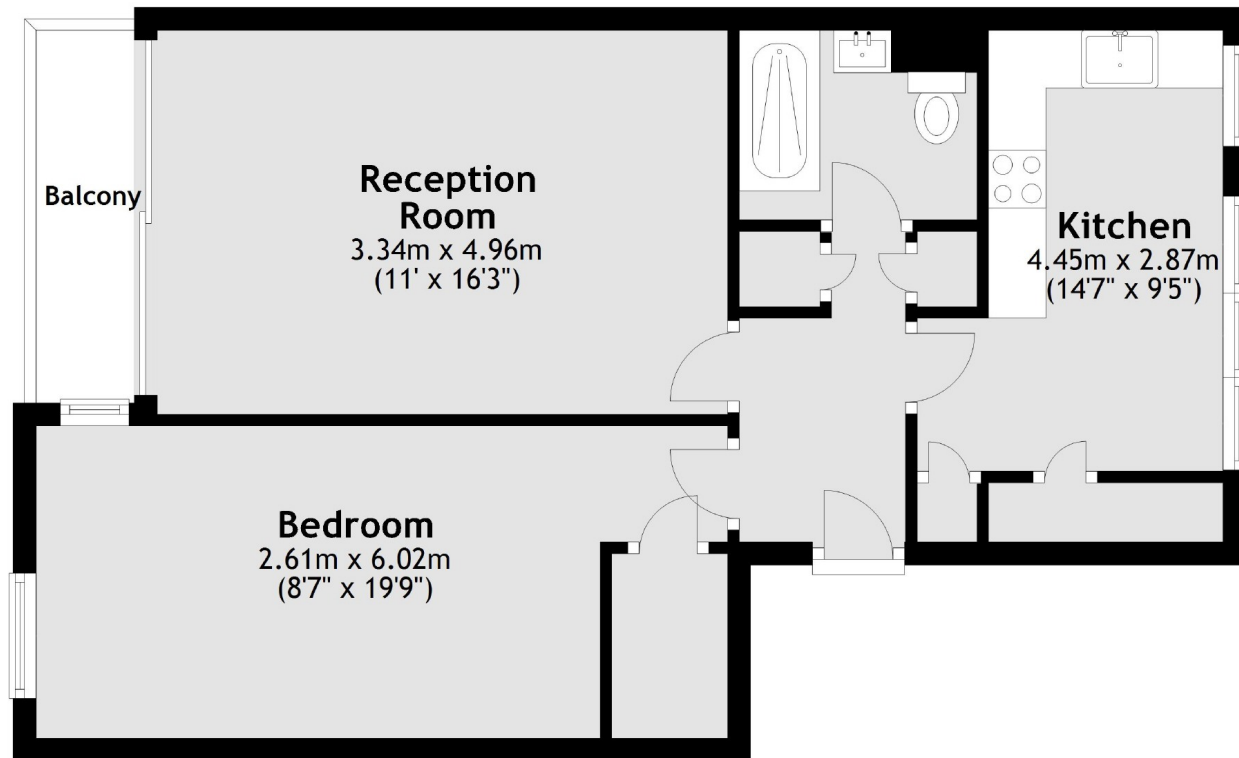
A large double bedroom flat within a purpose built development. This property has a large, separate kitchen and a spacious reception room, which leads to a private balcony.

Duncombe Road is within half a mile of both the Northern line tube and Archway Park and just moments from the local high street, which has a variety of shops and restaurants.

### Features

- Private Balcony
- Large Double Bedroom
- Separate Kitchen
- Plenty of Storage
- Great Transport Links
- Chain Free

# Duncombe Road, London, N19



Main area: Approx. 52.6 sq. metres (566.4 sq. feet)  
Plus balconies, approx. 3.2 sq. metres (34.4 sq. feet)