

Lissenden Gardens, NW5

£550,000

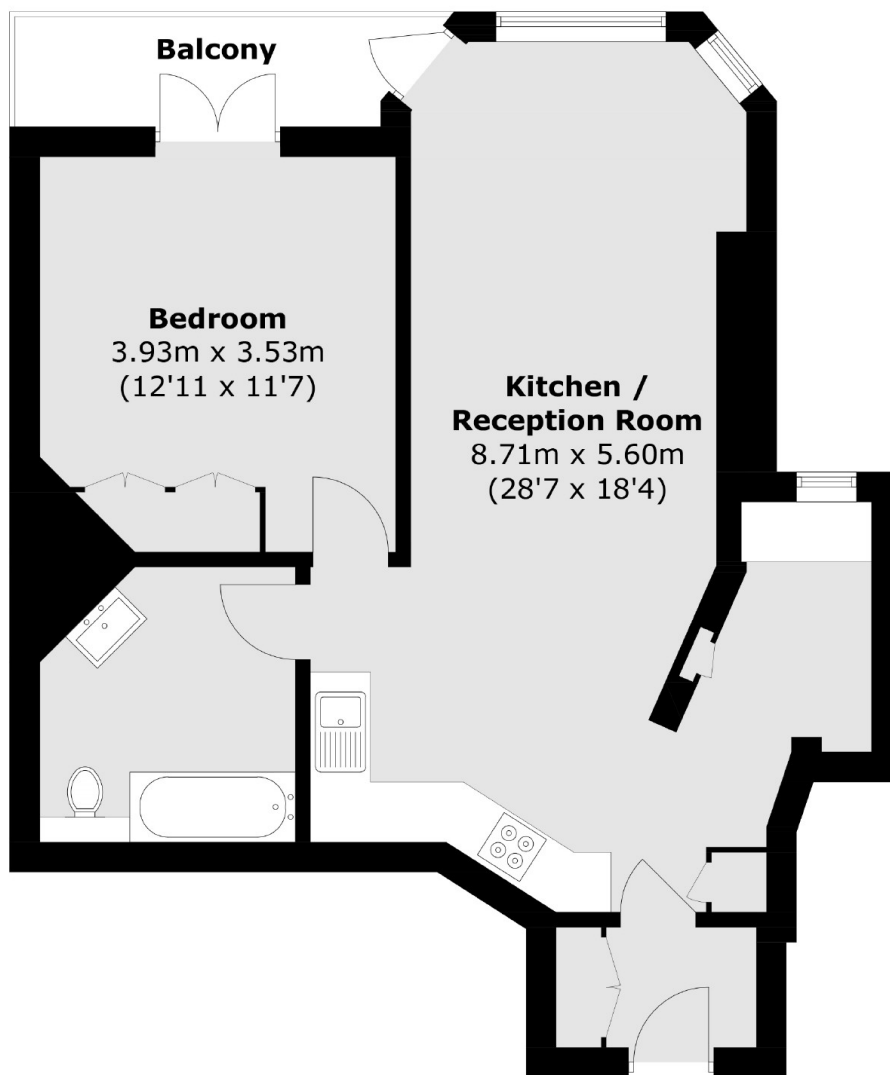
A well-presented one bedroom apartment on the top floor of a highly sought after mansion block. The apartment has a south east facing balcony and is located alongside Hampstead Heath, with over 700 acres of green open space.

Lissenden Gardens is located within easy reach of Gospel Oak overground station and Tufnell Park underground station (Northern line), along with the excellent selection of shops, restaurants, bars and schools the area has to offer.

Features

- Mansion Block
- Private Balcony
- Great Transport Links
- Open Plan Kitchen
- Residents Parking Zone
- Private Heath Entrance

Lissenden Gardens, London, NW5



Total area (approx.): 60.1 sq. m (646.9 sq. ft)