



Empire Square, N7

£755,000

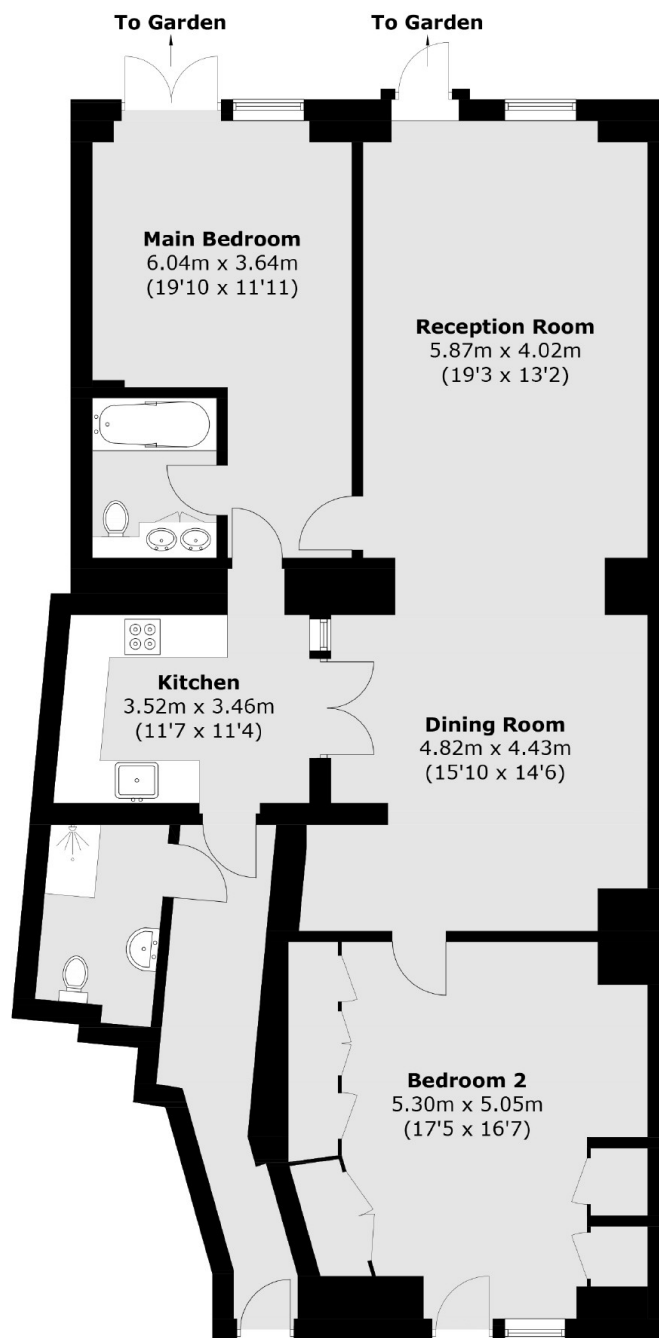
Situated on the ground floor of a contemporary block, this property offers two double bedrooms, a large semi-open plan kitchen and reception room, two bathrooms and a large, private garden.

Located close to Whittington Park and within a mile of Tufnell Park station (Northern line) and Holloway Road station (Piccadilly line). Local bus access can also be found on Holloway Road.

Features

- Two Double Bedrooms
- Two Bathrooms
- Private Garden
- Chain Free
- Great Transport Links
- Gated Development

Empire Square, London, N7



Ground Floor

Total area (approx.): 127.5 sq. m (1,372.4 sq. ft)