



Dartmouth Park Hill, N19

£550,000

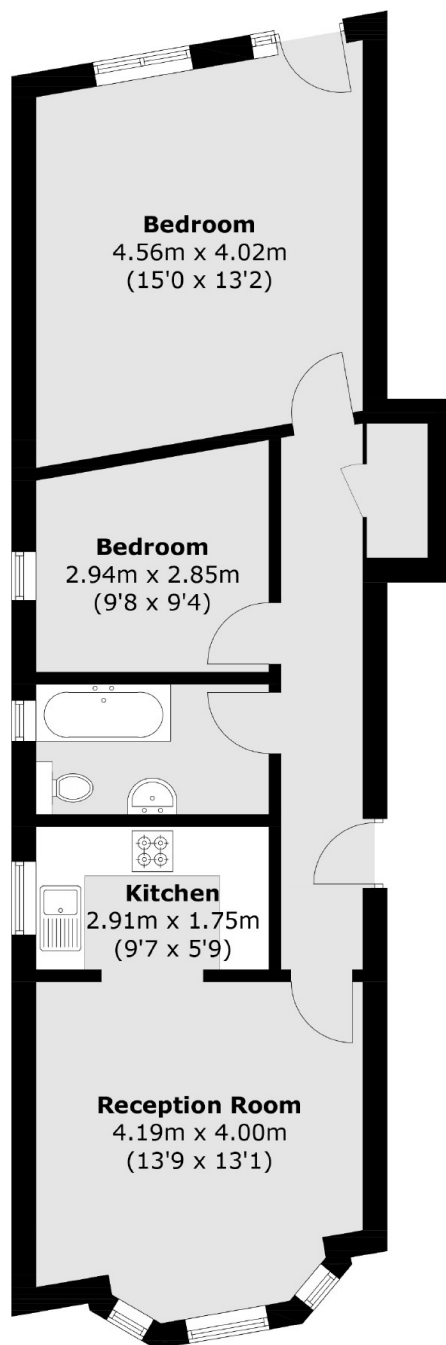
A lovely two bedroom ground floor flat set in an impressive Victorian conversion. This property offers an open plan kitchen/living area, a private garden at the rear and a large shared garden at the front.

Dartmouth Park Hill is ideally placed within easy reach of Tufnell Park station (Northern line) and the wonderful array of independent retailers alongside Waterlow Park and Hampstead Heath.

Features

- Two Bedrooms
- Private Garden
- Victorian Conversion
- Open Plan
- Great Transport Links
- Share of Freehold

Dartmouth Park Hill, London, N19



Ground Floor

Total area (approx.): 61.6 sq. m (663.0 sq. ft)