



Rowstock Gardens, N7

£500,000

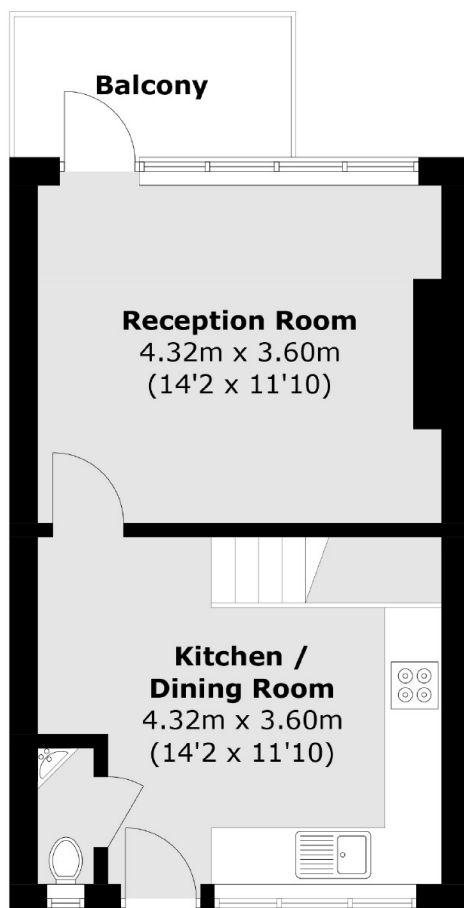
A two double bedroom split-level property with a private balcony. The first floor offers both a kitchen/diner and a reception room. On the second floor are two double bedrooms, a large bathroom and ample storage space.

Rowstock Gardens is well-located between Islington, Camden and Tufnell Park. This property is less than a mile from Caledonian Road (Piccadilly line) and Kentish Town (Northern line and Thameslink) stations.

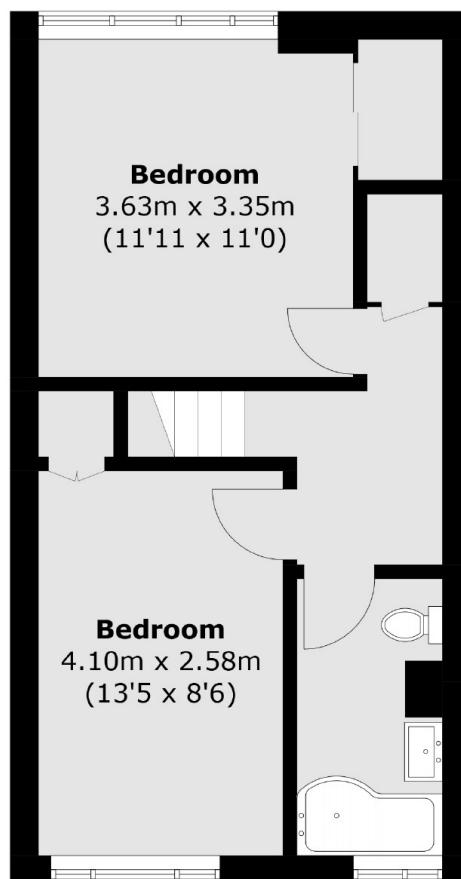
Features

- Two Double Bedrooms
- Split-Level
- Ample Storage
- Private Balcony
- Purpose Built Block
- Conservation Area

Rowstock Gardens, London, N7



First Floor



Second Floor

Total area (approx.): 69.7 sq. m (750.3 sq. ft)
Balcony area (approx.): 69.7 sq. m (750.3 sq. ft)