



## Kingsdown Road, N19

### £400,000

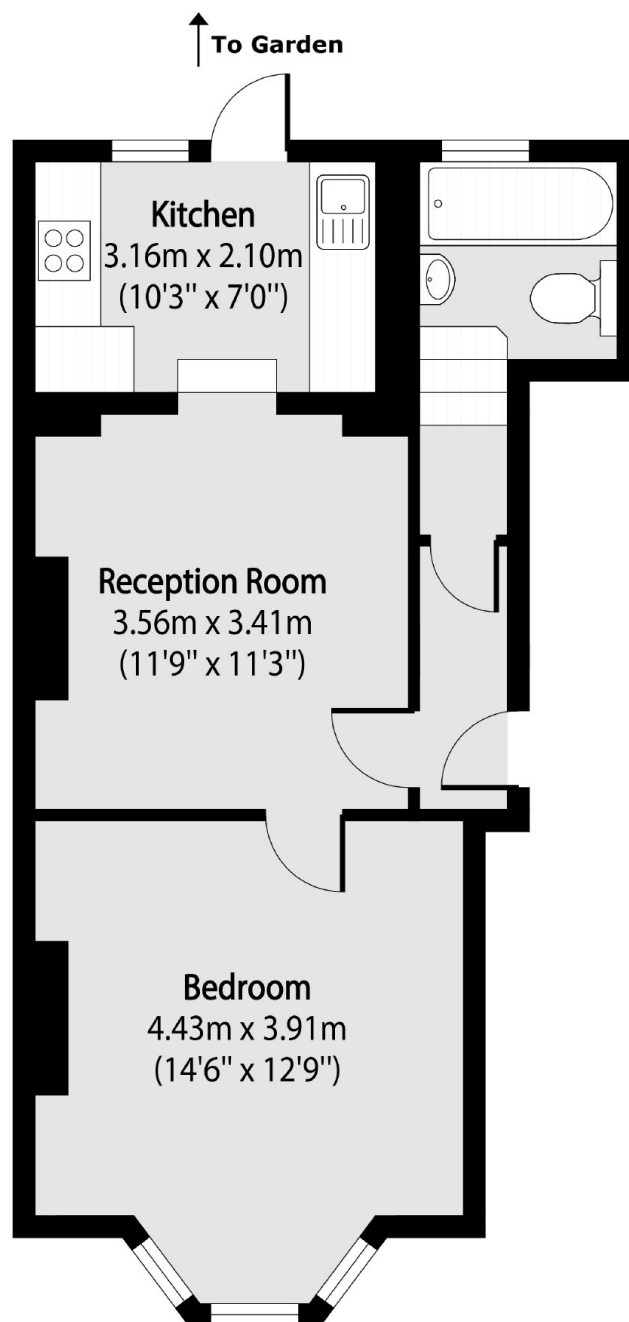
A very well-presented ground floor flat with a private, south facing garden. This Victorian conversion offers a spacious double bedroom, a large reception room and a separate kitchen.

Kingsdown Road is a quiet residential road and is close to Archway underground station (Northern line) as well as a wide variety of shops, cafés and restaurants on Holloway Road.

### Features

- Private South Facing Garden
- Great Transport Links
- Residential Road
- Ground Floor
- Period Conversion
- Chain Free

# Kingsdown Road, London, N19



Total area (approx): 42.88 sq m (461 sq. ft)