



Campdale Road, N7

£1,100,000

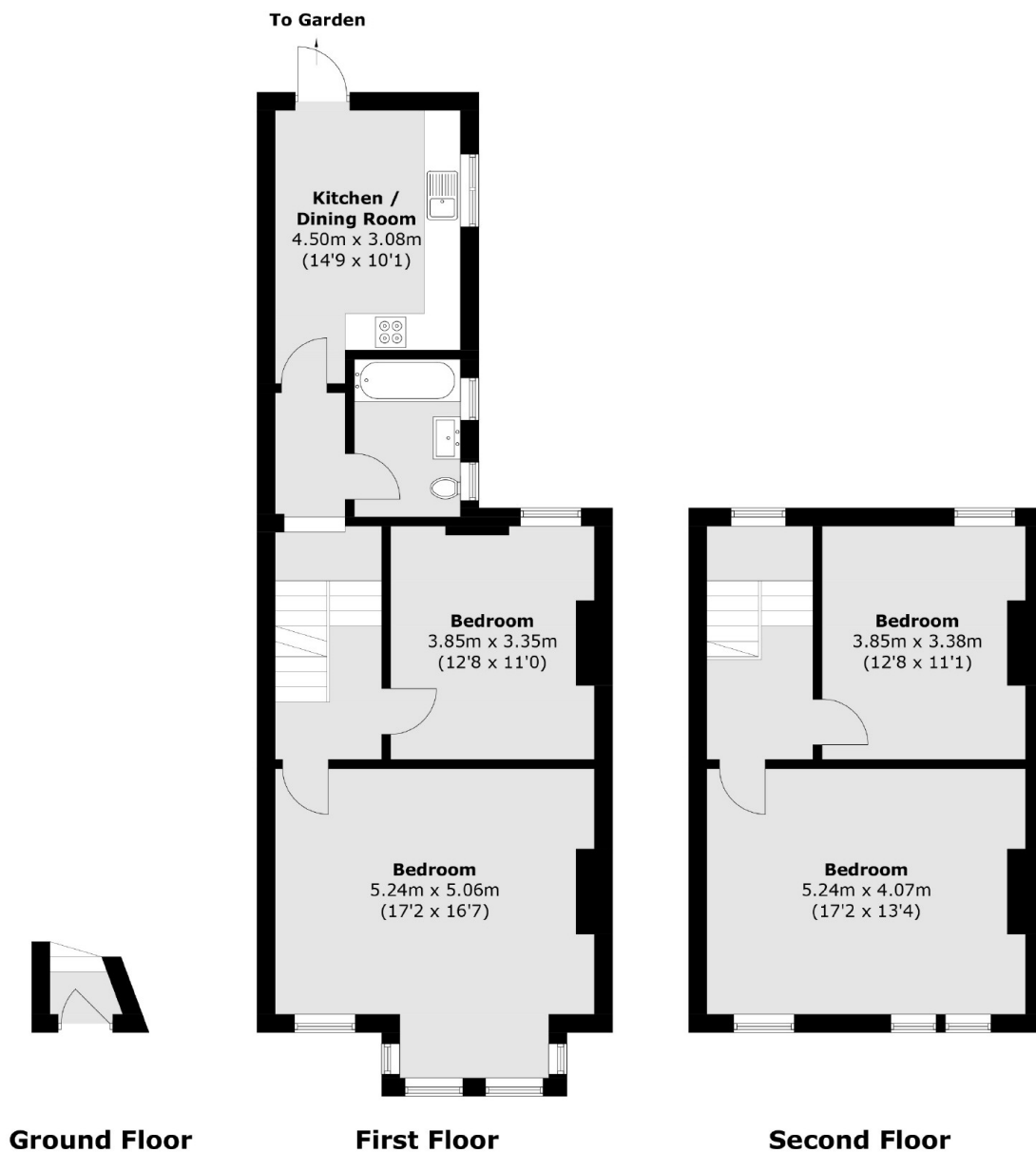
A grand Victorian upper maisonette, situated in the heart of Tufnell Park, offering three bedrooms, a garden, a separate kitchen, a large reception room and the option to create a large roof terrace and a loft conversion, subject to planning permission.

Campdale Road is ideally located for easy access to Tufnell Park station (Northern line), Upper Holloway (Overground) and the diverse array of boutique shops, cafés and restaurants on Fortress Road.

Features

- Share of Freehold
- Three Bedrooms
- Roof Terrace (STPP)
- Private Garden
- Great Transport Links
- Victorian Conversion

Campdale Road, London, N7



Total area (approx.): 109.4 sq. m (1,177.5 sq. ft)