

St. Peter's Church
Dartmouth Park, N19

Dexters



About the property

An outstanding four bedroom family home forming part of this impressive church conversion, originally opened in 1874.

The ground floor features a reception room with ample storage, a beautiful study with stripped timber flooring and a stained glass window. Both rooms are connected to a stunning, separate vaulted dining room, with two ornate stone columns and exposed brickwork.

Outside, accessible from the reception room, there is a private tiered patio with a lower seating area and a raised decked area.

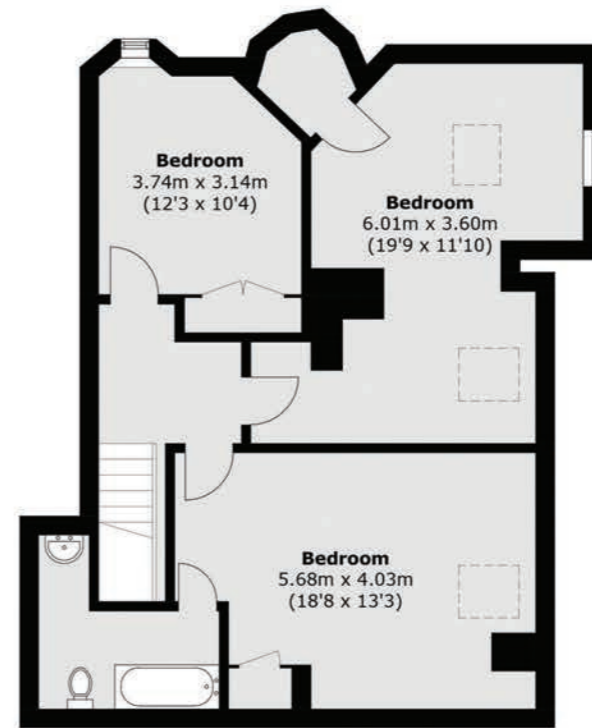
This property is bursting with character and has been finished to an exacting standard with quality fixtures and fittings, which tastefully complement its Gothic charm.

Key features

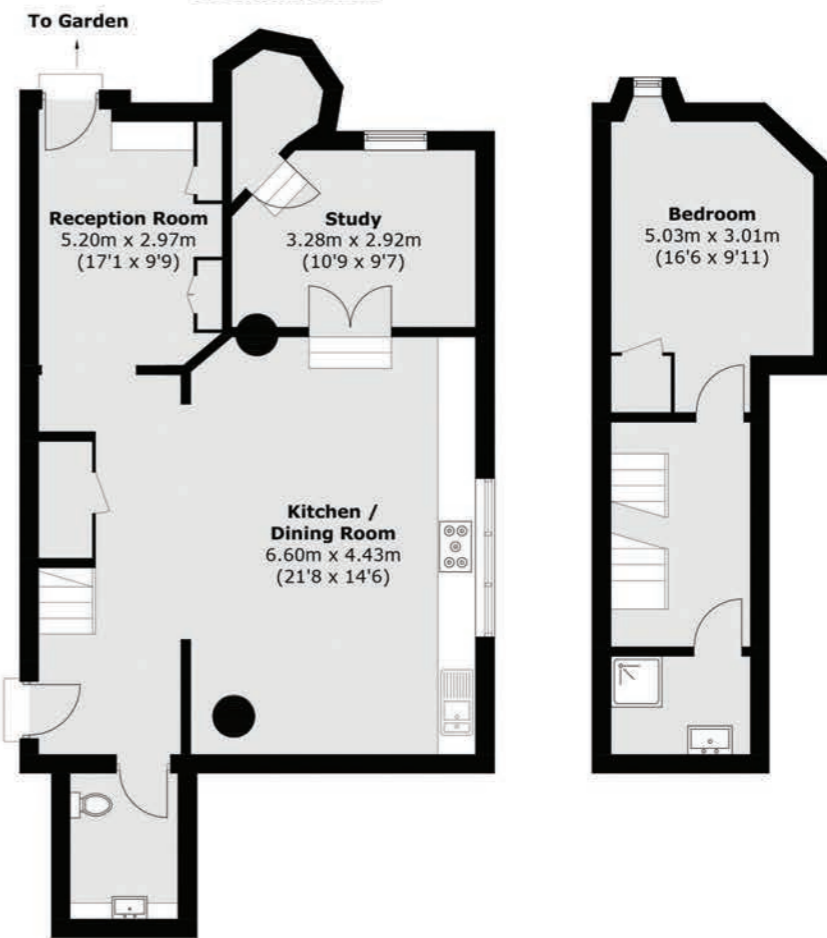
- Four Bedrooms
- Private Garden
- Church Conversion
- Impressive Character
- 1,873 Sq. Ft
- Stained Glass Windows







Second Floor



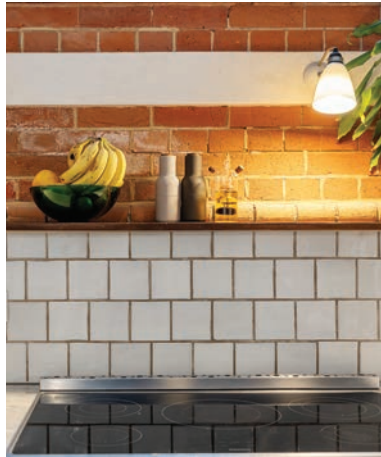
Ground Floor

First Floor



TOTAL AREA (APPROX.) 1,873.9 SQ. FT (174.1 SQ. M)

Energy Rating: C. We aim to make our particulars both accurate and reliable. However they are not guaranteed; nor do they form part of an offer or contract. If you require clarification on any points then please contact us, especially if you're traveling some distance to view. Please note that appliances and heating systems have not been tested and therefore no warranties can be given as to their good working order.



Dexters Dartmouth Park & Tufnell Park
64 Chetwynd Road,
London, NW5 1DE
020 7284 0101

Dexters