



Twisden Road, NW5

£1,500,000

Dexters



Twisden Road, NW5

Located in the heart of Dartmouth Park, an attractive end of terrace three bedroom Victorian house on a stunning and sought after tree-lined street.

The lower ground floor comprises a large double bedroom with an en suite WC and a large open plan kitchen/dining room, which leads onto a south facing garden.

The ground floor has a charming and bright reception room with period cornicing and an original fireplace. There is also a large study on this floor.

On the first floor is a large principal bedroom and a further double bedroom.

Twisden Road is a peaceful residential turning in the heart of the Dartmouth Park Conservation Area and is ideally placed moments from Hampstead Heath.

Features

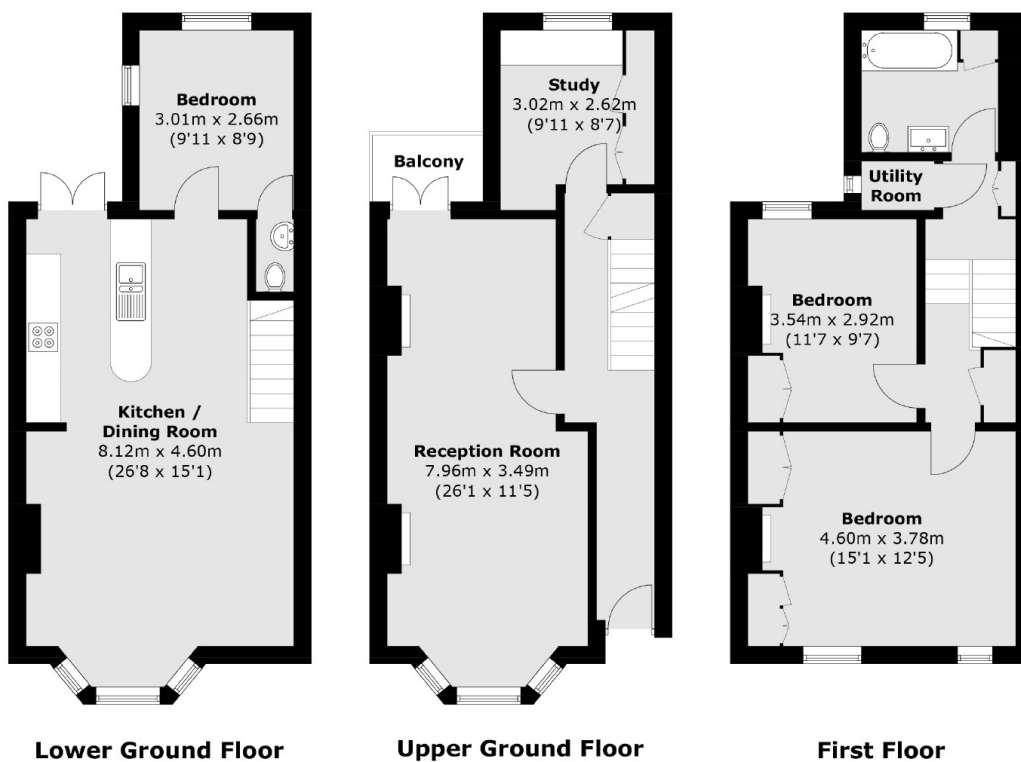
- Three Double Bedrooms
- Open Plan Kitchen/Living
- Period Features
- South Facing Garden
- Stunning Location
- Close to the Heath







Twisden Road, London, NW5



Total area (approx.): 129.8 sq. m (1,397.1 sq. ft)
Balcony (approx.): 2.2 sq. m (24 sq. ft)