



## Marlborough Road, N19

£725,000

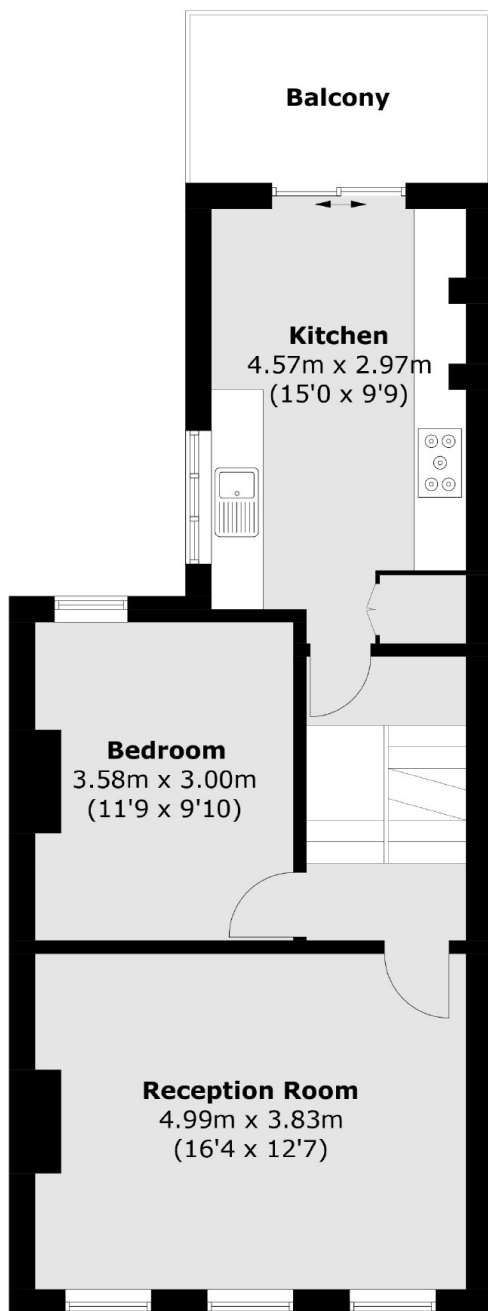
A three bedroom split-level apartment set in a Victorian conversion with a south facing roof terrace. The property has high ceilings throughout, a spacious reception room and a separate, newly installed kitchen.

Marlborough Road is tree-lined with easy access to local shops, cafés and restaurants. The property is within half a mile of both Archway and Upper Holloway stations, and moments from Whittington Park.

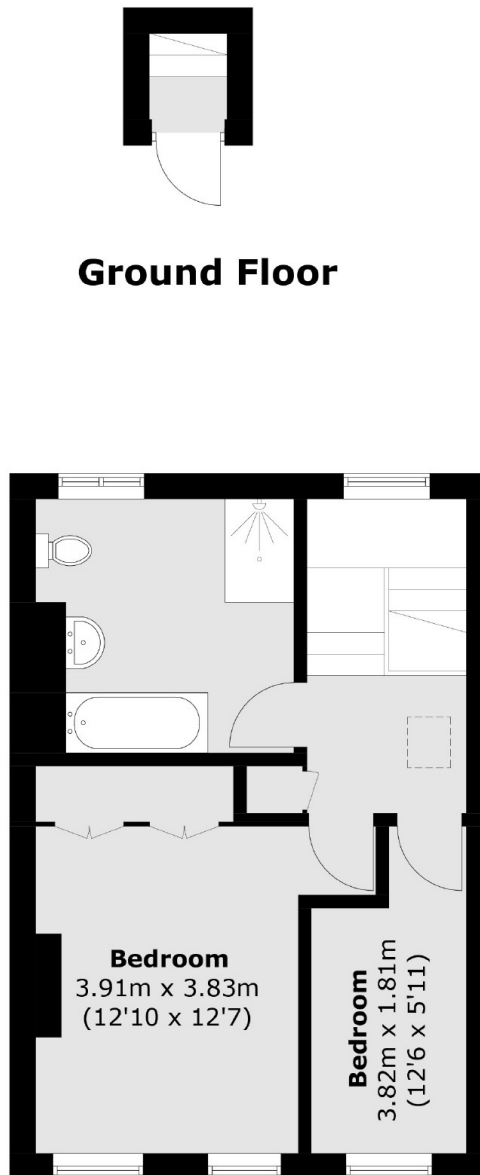
### Features

- Three Bedrooms
- South Facing Terrace
- Victorian Conversion
- Split-Level
- Recently Renovated
- Great Transport Links

# Marlborough Road, London, N19



**First Floor**



**Second Floor**

Total area (approx.): 92.1 sq. m (991.4 sq. ft)  
Balcony area : 6.7 sq. m (72.1 sq. ft)