



## Dartmouth Park Road, NW5

£1,350,000

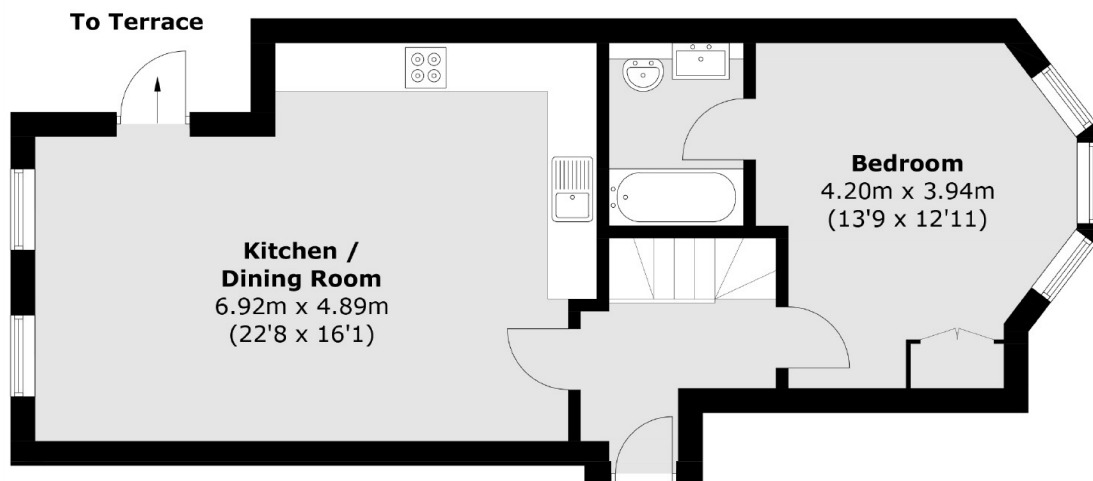
Situated in one of Dartmouth Park's most sought after streets, an exceptional garden apartment in a detached corner property, beautifully restored to its original Victorian state.

The property is located in a quiet tree-lined avenue of Victorian villas. Hampstead Heath and Parliament Hill Fields, with their panoramic views over London, are located at the end of the road.

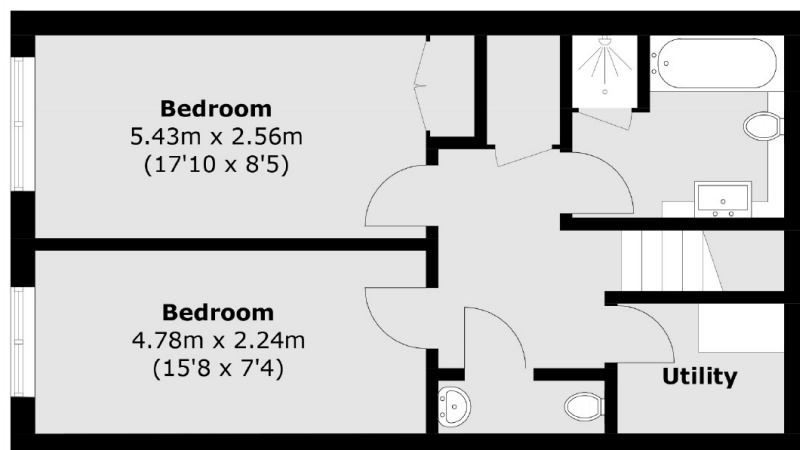
### Features

- Three Double Bedrooms
- Reception Room
- Open Plan Kitchen
- Family Bathroom
- Guest WC/Utility
- Private Garden

# Dartmouth Park Road, London, NW5



**Ground Floor**



**Lower Ground Floor**

Total area (approx.): 99.9 sq. m (1,075.3 sq. ft)