

Holloway Road, N7

£750,000

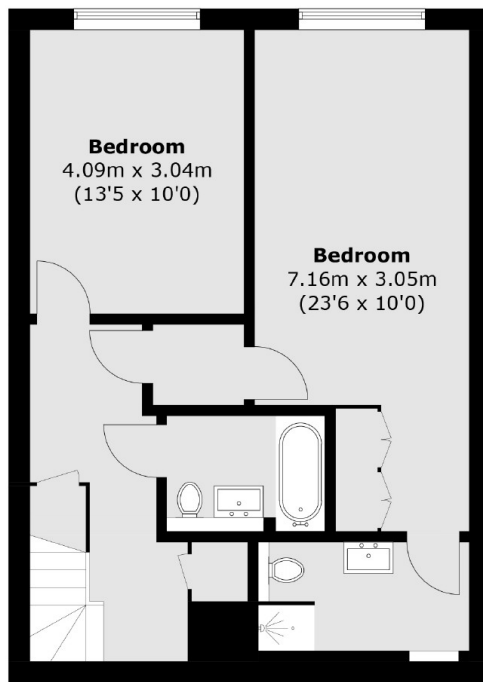
A split-level two bedroom apartment set on the top floor of a warehouse conversion. The flat is well-maintained throughout, with a large open plan living area, two bathrooms and a balcony.

Located close to the green open space of Whittington Park and within a mile of Tufnell Park station (Northern line) and Holloway Road station (Piccadilly line). Local bus access can also be found on Holloway Road.

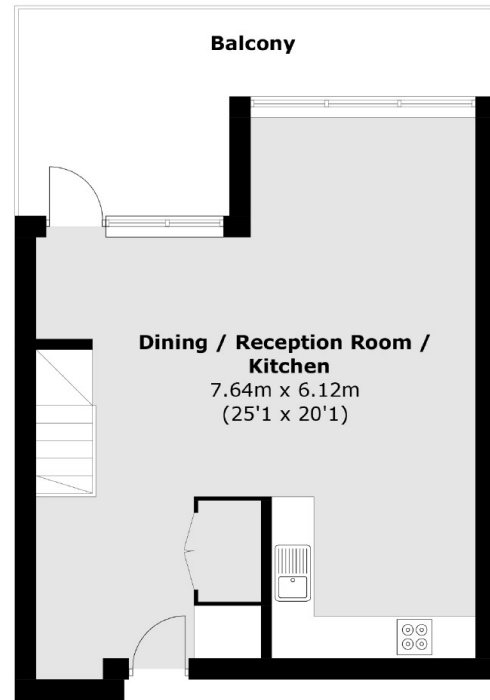
Features

- Top Floor Flat
- Warehouse Conversion
- Excellent Condition
- Great Transport Links
- Private Balcony
- Split-Level

Holloway Road, London, N7



Second Floor



Third Floor

Total area (approx.): 99.7 sq. m (1,073.1 sq. ft)
Balcony: 13.5 sq. m (145.3 sq. ft)