



St. Georges Avenue, N7

£550,000

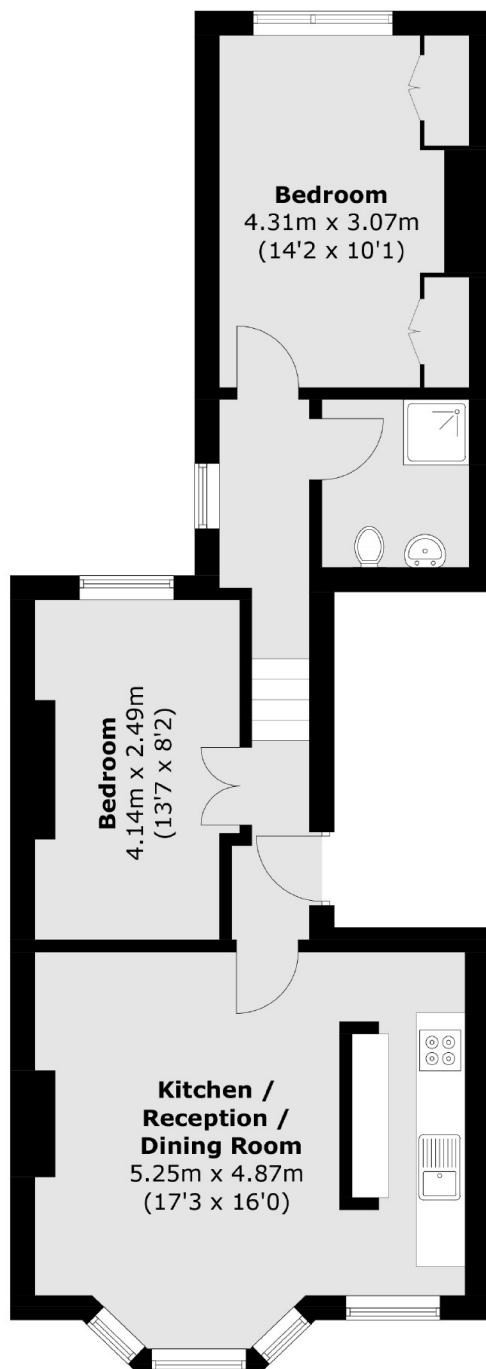
Situated on one of Tufnell Park's most sought after roads, a spacious two double bedroom flat with a separate reception room/kitchen set over two floors of a Victorian house.

St. George's Avenue is ideally located close to Hampstead Heath, Tufnell Park underground station and the diverse array of boutique shops, restaurants and cafés on Fortress Road.

Features

- Two Bedrooms
- Split-Level
- Victorian Conversion
- Open Plan Living
- Chain Free
- Share of Freehold

St. Georges Avenue, London, N7



Total area (approx.): 58.1 sq. m (625.4 sq. ft)