



St. John's Way, N19

£500,000

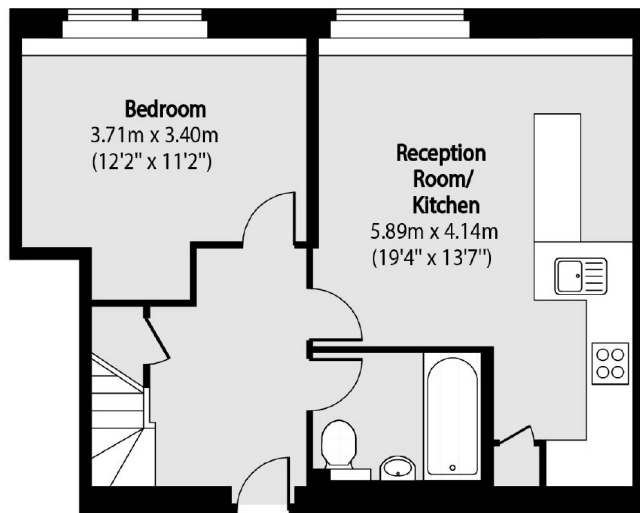
A two double bedroom, two bathroom split-level apartment in a warehouse conversion. This property offers a large open plan kitchen and reception room with ample storage space and comes with off-street parking.

St. John's way is well-located for the shops, restaurants and transport links around both Archway and Upper Holloway. The green open spaces of both Hampstead Heath and Waterlow Park are also nearby.

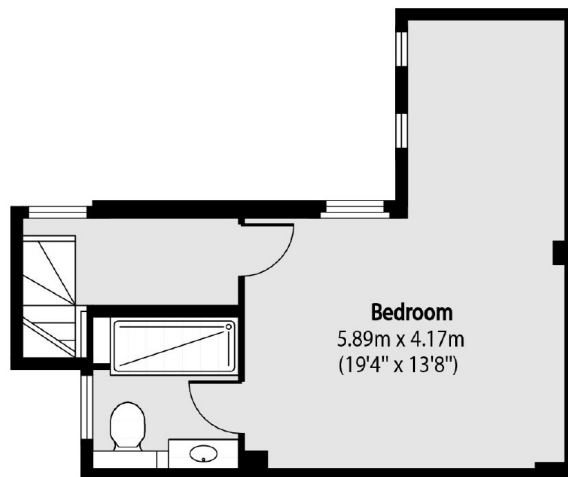
Features

- Two Bedrooms
- Share of Freehold
- Split-Level
- Off-Street Parking
- Ample Storage
- Great Transport Links

St. John's Way, London, N19



Ground Floor



First Floor

Total area (approx): 70.98 sq m (764 sq. ft)