



Colva Walk, N19

£650,000

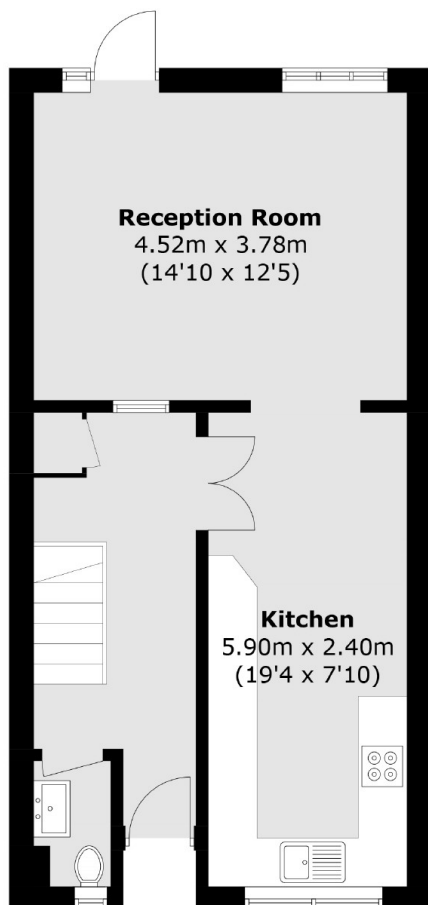
A three bedroom freehold house in a secluded street in Dartmouth Park with a front and rear garden. This property has a large eat-in kitchen, a spacious reception room, a downstairs WC and a family bathroom.

Located in the Dartmouth Park Conservation Area and ideally placed within easy reach of Hampstead Heath, the local shops and cafés on Swain's Lane and equidistant from Tufnell Park and Archway stations.

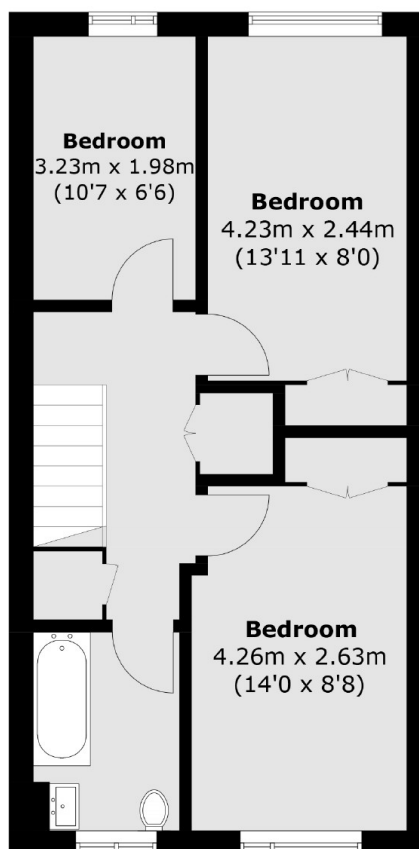
Features

- Three Bedrooms
- Freehold
- Garden
- Chain Free
- Circa 1000 Sq Ft
- Open Plan

Colva Walk, London, N19



Ground Floor



First Floor

Total area (approx.): 89.4 sq. m (962.3 sq. ft)