



Anson Road, N7

£550,000

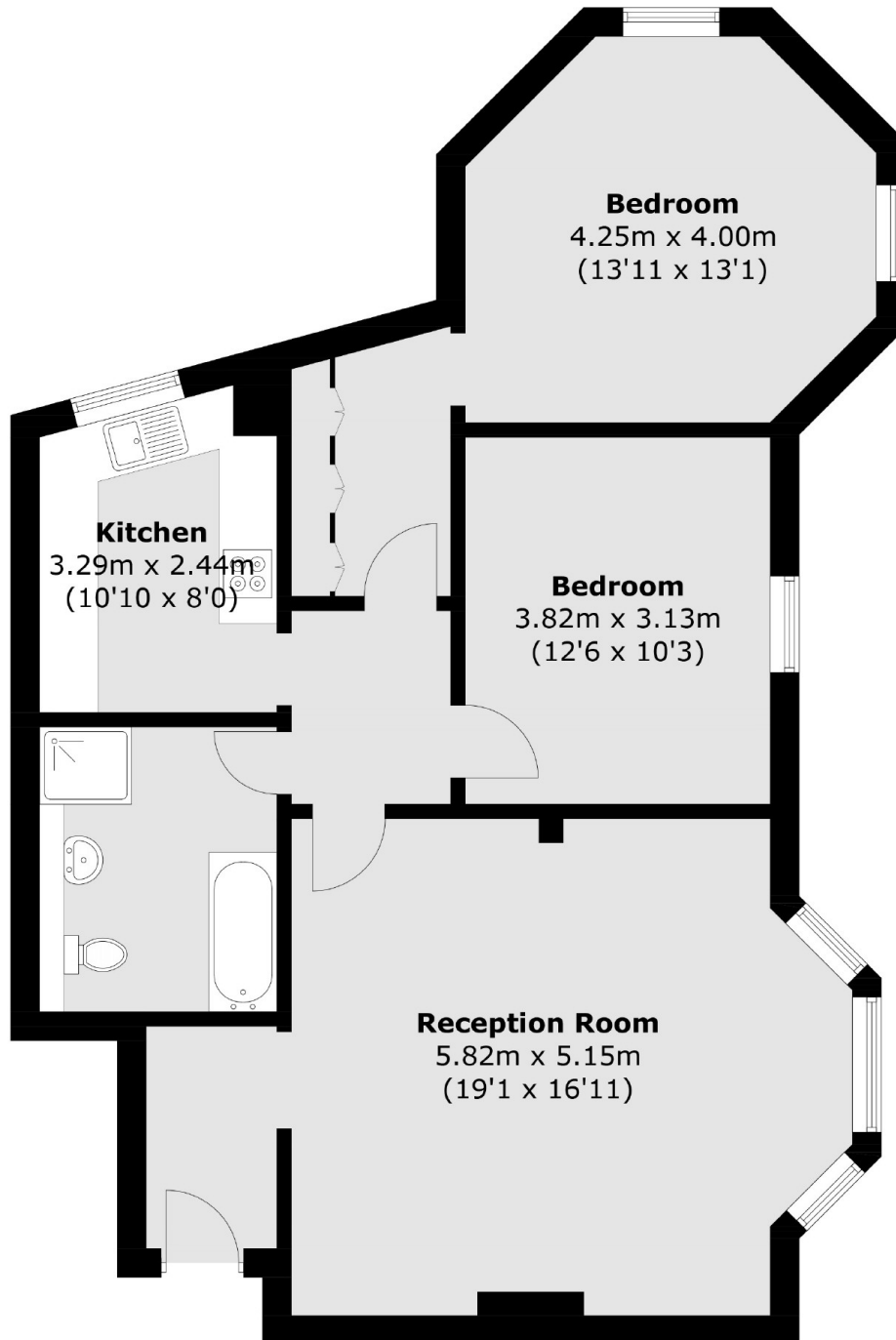
A charming two bedroom apartment on the lower ground floor of this Victorian mansion block. This property has a separate kitchen, a large reception room and a communal garden.

Anson Road is tree-lined and is within half a mile of Tufnell Park tube (Northern line) and within a mile of Kentish Town station (Northern line & Thameslink) and Caledonian Road tube (Piccadilly line).

Features

- Two Bedrooms
- One Bathroom
- Lease Remaining 65 Years
- Outstanding Local Schools
- Private Entrance
- Good Transport Links

Anson Road, London, N7



Total area (approx.): 84.2sq. m (906.3 sq. ft)