



Dartmouth Park Avenue, NW5

£949,950

Forming part of an imposing semi-detached Victorian house, a well-presented and characterful two double bedroom ground floor flat set on one of Dartmouth Park's most prestigious turnings.

Dartmouth Park Avenue is within easy reach of Hampstead Heath, Tufnell Park tube (Northern line) and several bus routes to the city, West End and the St Pancras Eurostar terminal.

Features

- Two Double Bedrooms
- Private Entrance
- West Facing Garden
- High Ceilings
- Share of Freehold
- Chain Free



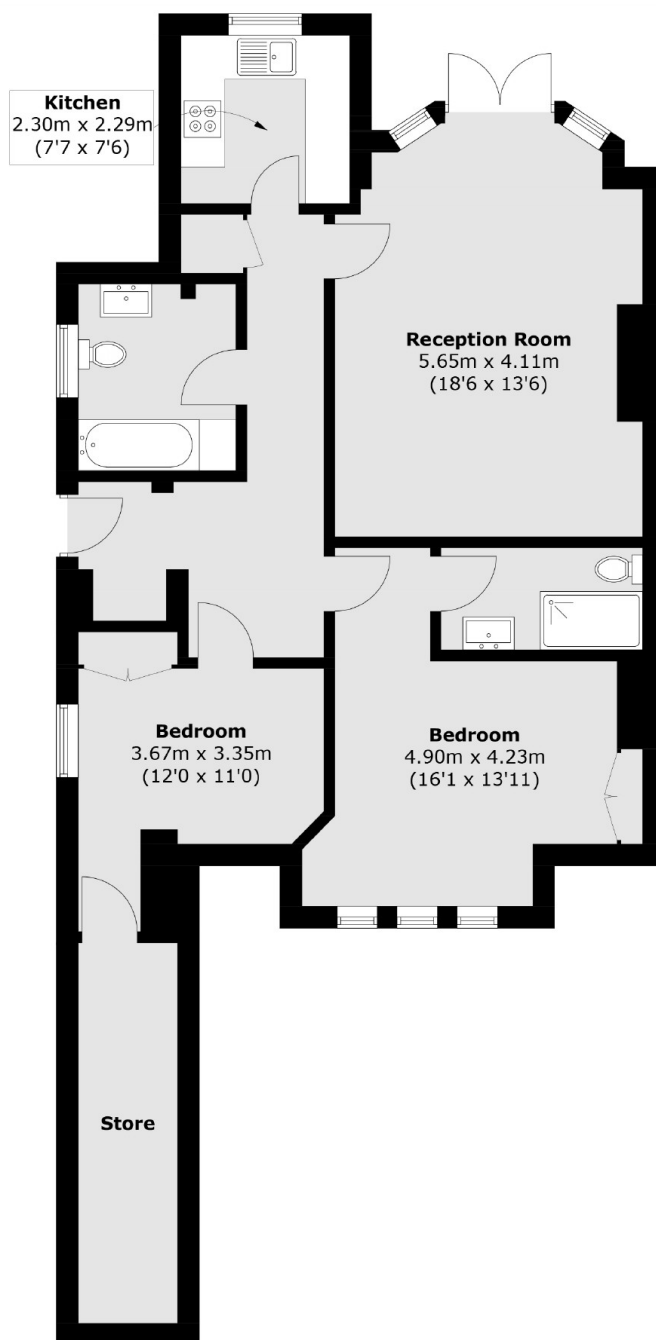
Dartmouth Park Avenue, NW5

On entrance, there is a large hallway leading to two double bedrooms, one with a recently renovated large en suite. This property offers a spacious secondary bathroom, a separate kitchen and a large reception room with french doors leading out to the garden.

This property owns a large section of the rear garden leading directly off the property.



Dartmouth Park Avenue, London, NW5



Lower Ground Floor

Total area (approx.): 86.4 sq. m (930.0 sq. ft)