



## Hungerford Road, N7

£525,000

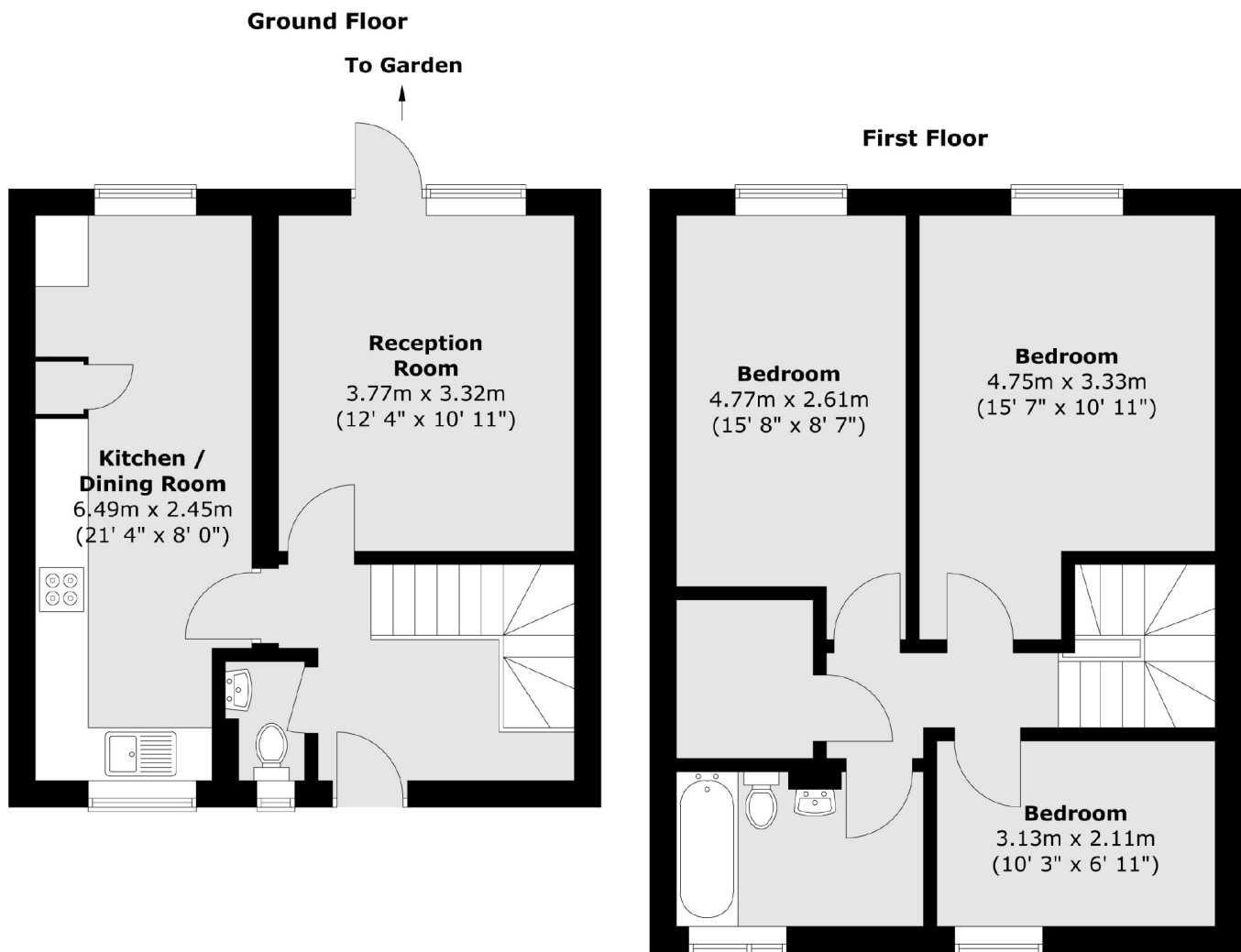
A spacious three bedroom apartment situated on the ground and first floors of a purpose built development. The apartment offers great living space, a large kitchen and two private gardens.

Situated between Camden, Islington and Tufnell Park and close to Caledonian Road (Piccadilly Line), Tufnell Park (Northern Line) and Kentish Town stations (Northern Line/Thameslink).

### Features

- Three Bedrooms
- Private Entrance
- Kitchen/Reception Room
- Split-Level
- Private Gardens
- Good Transport Links

## Hungerford Road, London, N7



Total area (approx.) : 88.5 sq. m (953 sq. ft)

### Contact

To arrange a viewing call our office on the number below or visit our website.



Energy Rating: C. We aim to make our particulars both accurate and reliable. However they are not guaranteed; nor do they form part of an offer or contract. If you require clarification on any points then please contact us, especially if you're traveling some distance to view. Please note that appliances and heating systems have not been tested and therefore no warranties can be given as to their good working order.