



Hornsey Lane, N6

£650,000

A bright apartment with a spacious reception area, modern kitchen and a balcony, within a popular block with communal gardens and the benefit of garage parking.

Well located for access into Crouch End with its shops and restaurants there is also easy access to Highgate Village and local transport connections to the tube.

Features

- Two Double Bedrooms
- Reception Room
- Balcony
- Communal Gardens
- Garage Parking
- Bicycle Storage

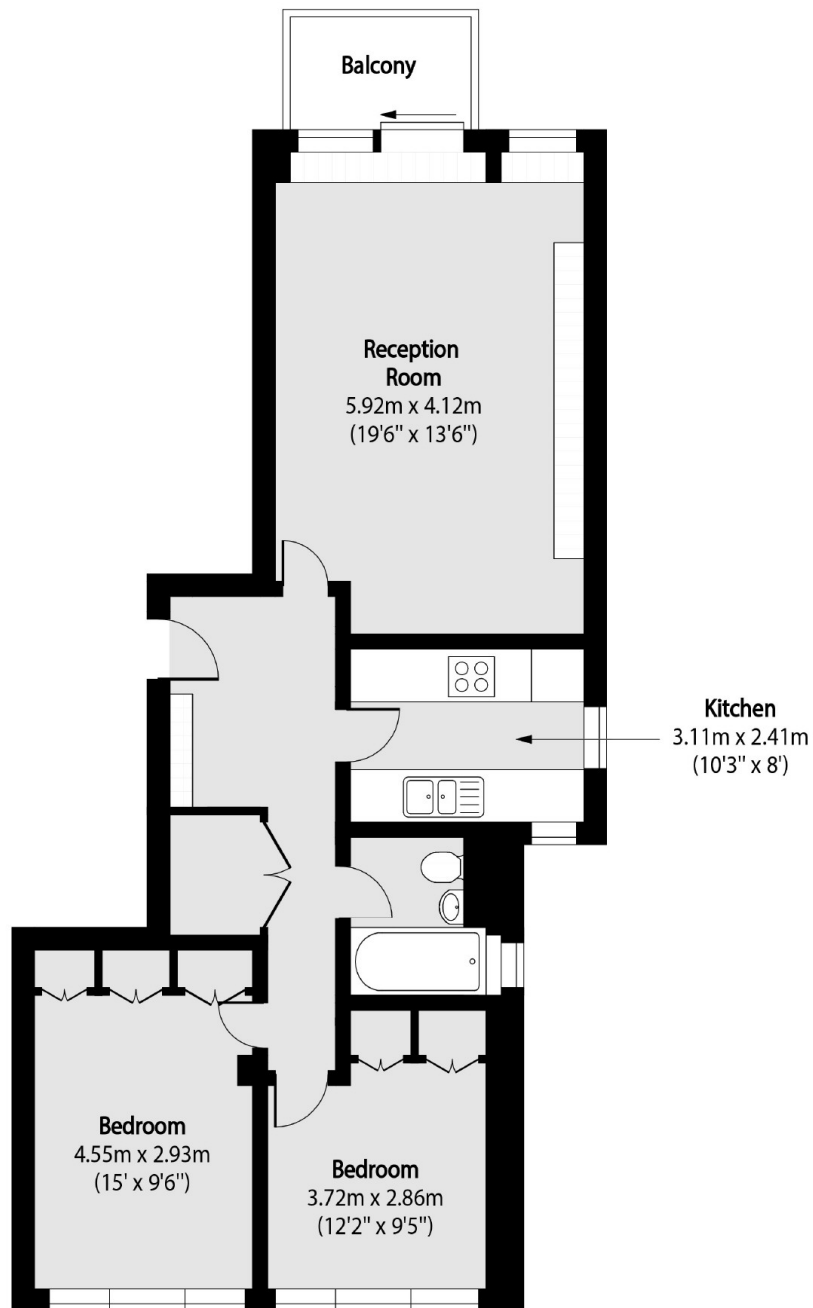


Hornsey Lane, N6

With lift access to the fifth floor, as you enter the apartment there is a generous entrance hallway with good storage and access to all rooms.



Hornsey Lane, London, N6



Total area (approx): 74.33 sq m (800 sq. ft)

Balcony total area (approx): 3.60 sq m (39 sq. ft)

Dexters

Highgate
35A Highgate High Street
London
N6 5JT
Sales
020 8545 8584

Energy Rating: TBC. We aim to make our particulars both accurate and reliable. However they are not guaranteed; nor do they form part of an offer or contract. If you require clarification on any points then please contact us, especially if you're traveling some distance to view. Please note that appliances and heating systems have not been tested and therefore no warranties can be given as to their good working order.

 **RICS** | Regulated
Estate Agent
and Letting Agent

[dexters.co.uk](https://www.dexters.co.uk)