



Brim Hill, N2

£1,590,000

A terrific opportunity awaits you to acquire this attractive four bedroom detached home. Whilst requiring modernisation, the property has scope for expansion, subject to the required consents.

In the popular Hampstead Garden Suburb Conservation Area, the house is set back and elevated from the road in a leafy turning between the tube, local schools and amenities at Market Place.

Features

- Four Bedrooms
- Two Reception Rooms
- Kitchen/Breakfast Room
- Family Bathroom
- Garden
- Garage



Brim Hill, N2

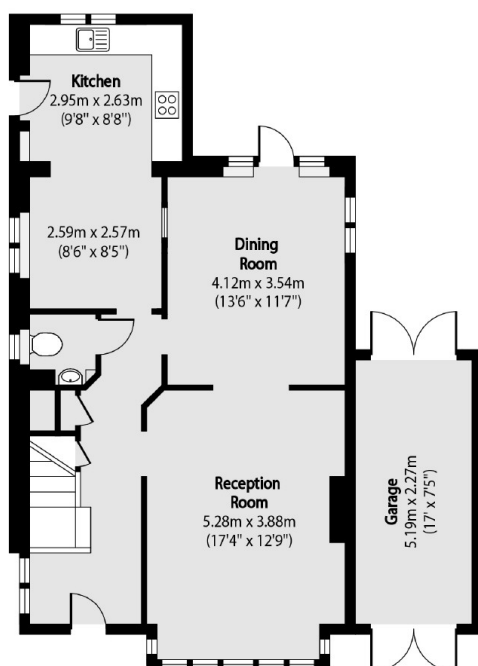
On the ground floor there is an entrance hall which in turn leads to the kitchen/breakfast room and both the reception rooms where french doors take you to the rear garden.

On the first floor there are four bedrooms, a separate cloakroom/WC, a family bathroom and access to the loft space.

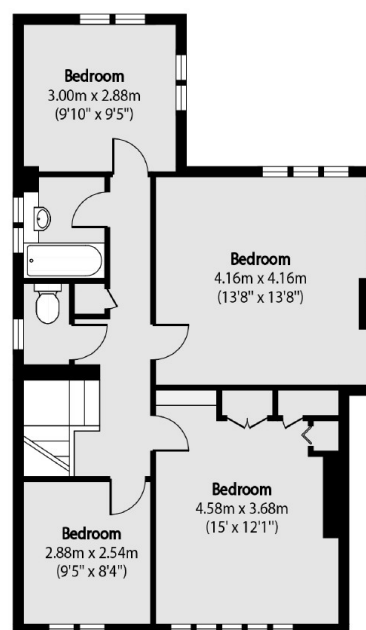


Brim Hill, London, N2

Ground Floor



First Floor



Total area (approx): 132.20 sq m (1423 sq. ft)

Garage Total area (approx): 11.96 sq m (129 sq. ft)

Dexters

Highgate
35A Highgate High Street
London
N6 5JT
Sales
020 8545 8584

Energy Rating: E. We aim to make our particulars both accurate and reliable. However they are not guaranteed; nor do they form part of an offer or contract. If you require clarification on any points then please contact us, especially if you're traveling some distance to view. Please note that appliances and heating systems have not been tested and therefore no warranties can be given as to their good working order.

 **RICS** | Regulated
Estate Agent
and Letting Agent

[dexters.co.uk](https://www.dexters.co.uk)