

Bridgepoint Place, N6

£1,695,000

Dexters



Bridgepoint Place, London, N6

An exceptional architect designed home set in a small and secure development behind electric gates close to the village, Archway Underground station (Northern Line) and Waterlow Park.

The house has been particularly well maintained and offers flexible and spacious accommodation over three floors with the additional benefit of off street parking and a west facing terrace.

This rarely available home offers wonderfully proportioned windows that flood the house with light and backs directly onto a reservoir making it a quiet and discrete location.

Bridgepoint Place is a discretely positioned development of only four houses and benefits from being within short walking distance of Highgate Village with its eclectic shops and restaurants.

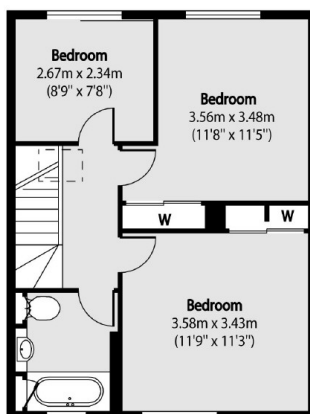
Features

- 24 ft Reception Room
- Kitchen/Dining Room
- Three/Four Bedrooms
- Three Bathrooms
- West Facing Terrace
- Off Street Parking

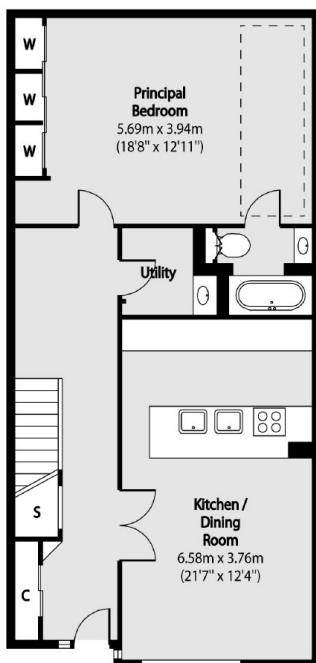


Bridgepoint Place, London, N6

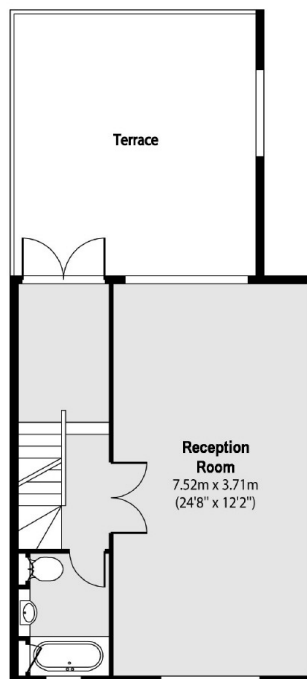
Second Floor



Ground Floor



First Floor



Total area (approx): 154.31 sq m (1661 sq. ft)

Terrace total area (approx): 23.31 sq m (251 sq. ft)

Dexters

Highgate
35A Highgate High Street,
Highgate, London, N6 5JT
Sales
020 8545 8584

Energy Rating: C. We aim to make our particulars both accurate and reliable. However they are not guaranteed; nor do they form part of an offer or contract. If you require clarification on any points then please contact us, especially if you're traveling some distance to view. Please note that appliances and heating systems have not been tested and therefore no warranties can be given as to their good working order.

RICS | Regulated
Estate Agent
and Letting Agent

[dexters.co.uk](https://www.dexters.co.uk)