



Colney Hatch Lane, N10

£315,000

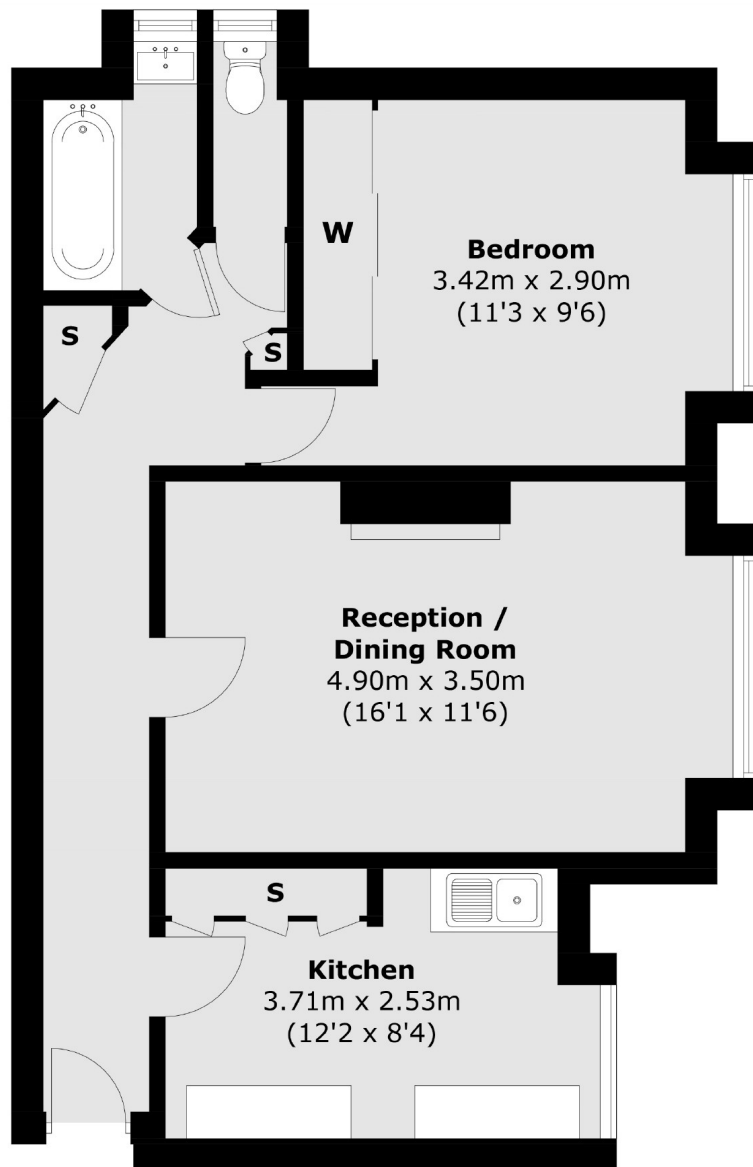
A spacious one bedroom flat set on the top floor of a particularly quietly positioned block close to the multiple shopping and transport facilities of Muswell Hill.

The flat retains much of its Art Deco style and would make an excellent first time purchase or rental investment.

Features

Reception Room
Kitchen
Bedroom
Bathroom
Separate WC
Quiet Position

Colney Hatch Lane, London, N10



Third Floor

Total area (approx.): 59.0 sq. m (635 sq. ft)

Contact

To arrange a viewing call our office on the number below or visit our website.



Energy Rating: E. We aim to make our particulars both accurate and reliable. However they are not guaranteed; nor do they form part of an offer or contract. If you require clarification on any points then please contact us, especially if you're traveling some distance to view. Please note that appliances and heating systems have not been tested and therefore no warranties can be given as to their good working order.