



Milton Road, N6

£650,000

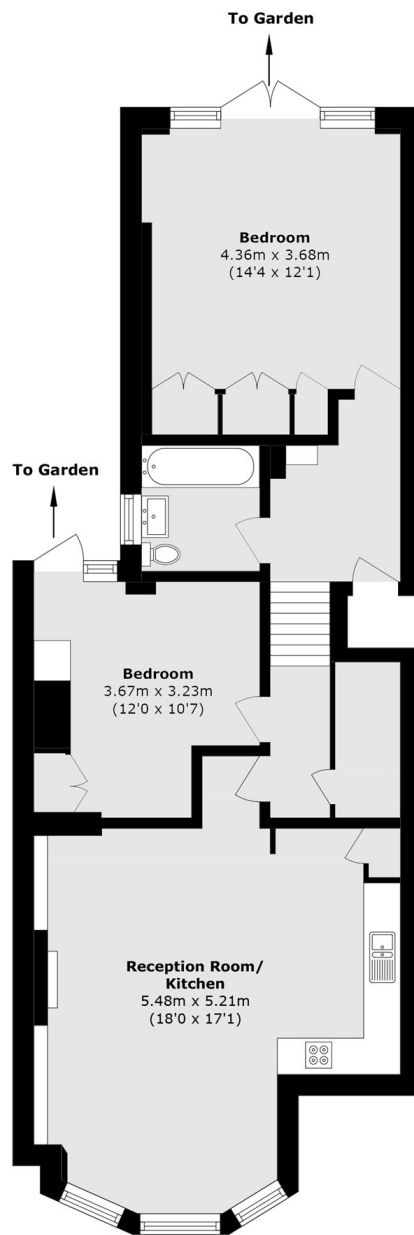
A generous two bedroom garden flat converted from a Victorian house with its own private garden, wooden flooring and a spacious reception room with fitted open plan kitchen.

Located in this highly popular enclave of Victorian properties, close to The Parkland Walk and approximately 0.5 of a mile to Highgate underground station (Northern line).

Features

- Two Bedrooms
- Bathroom
- Bay-Fronted Reception
- Open plan Kitchen
- Private Garden
- Share Of Freehold

Milton Road, London, N6



Total area (approx.): 65.3 sq. m (702.8 sq. ft)