



Spencer Rise, NW5

£4,100 Per calendar month

A charming three bedroom, two bathroom Victorian mid-terrace house with wood flooring, a modern kitchen diner, a patio garden and period features throughout.

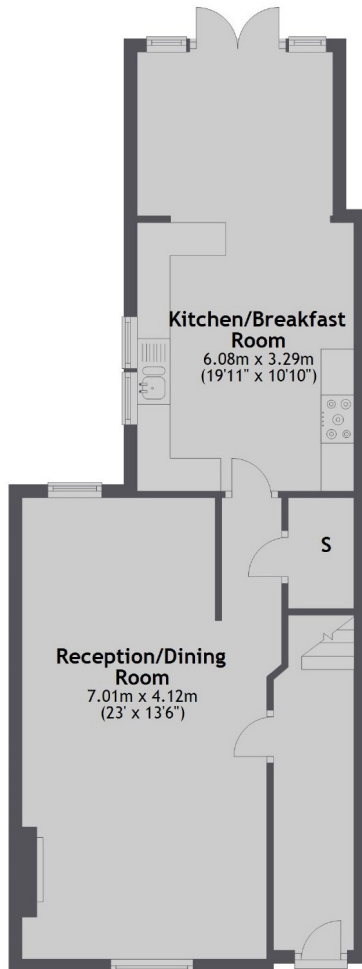
Dartmouth Park is well-located for Tufnell Park and Kentish Town, with access to local boutiques, bars, restaurants, good quality schools, Hampstead Heath and a variety of transport links.

Features

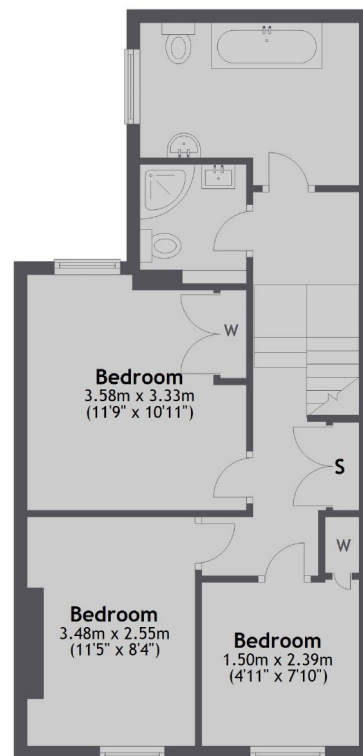
- Victorian House
- Period Features
- Three Bedrooms
- Kitchen Diner
- Private Patio Garden
- Desirable Location

Spencer Rise, London, NW5

Ground Floor



First Floor



Total area: approx. 102.9 sq. metres (1107.3 sq. feet)

Dexters

Highgate
35A Highgate High Street
London
N6 5JT
Lettings
020 8545 8585

Energy Rating: E. We aim to make our particulars both accurate and reliable. However they are not guaranteed; nor do they form part of an offer or contract. If you require clarification on any points then please contact us, especially if you're traveling some distance to view. Please note that appliances and heating systems have not been tested and therefore no warranties can be given as to their good working order.

 **RICS** | Regulated
Estate Agent
and Letting Agent

[dexters.co.uk](https://www.dexters.co.uk)