



Aylmer Road, N2

£1,200,000

Set back from the road behind a deep gated driveway, a large ground floor apartment in this small and exclusive block which has generous parking and delightful communal gardens.

Located on the borders of Hampstead Garden Suburb, there is easy access to East Finchley tube, shopping facilities, Highgate, Kenwood and schools along with places of worship

Features

- Two Bedrooms
- Two Bathrooms
- Large Reception Room
- Poggenpohl Fitted Kitchen
- Private Terrace
- Secure Parking



Aylmer Road, N2

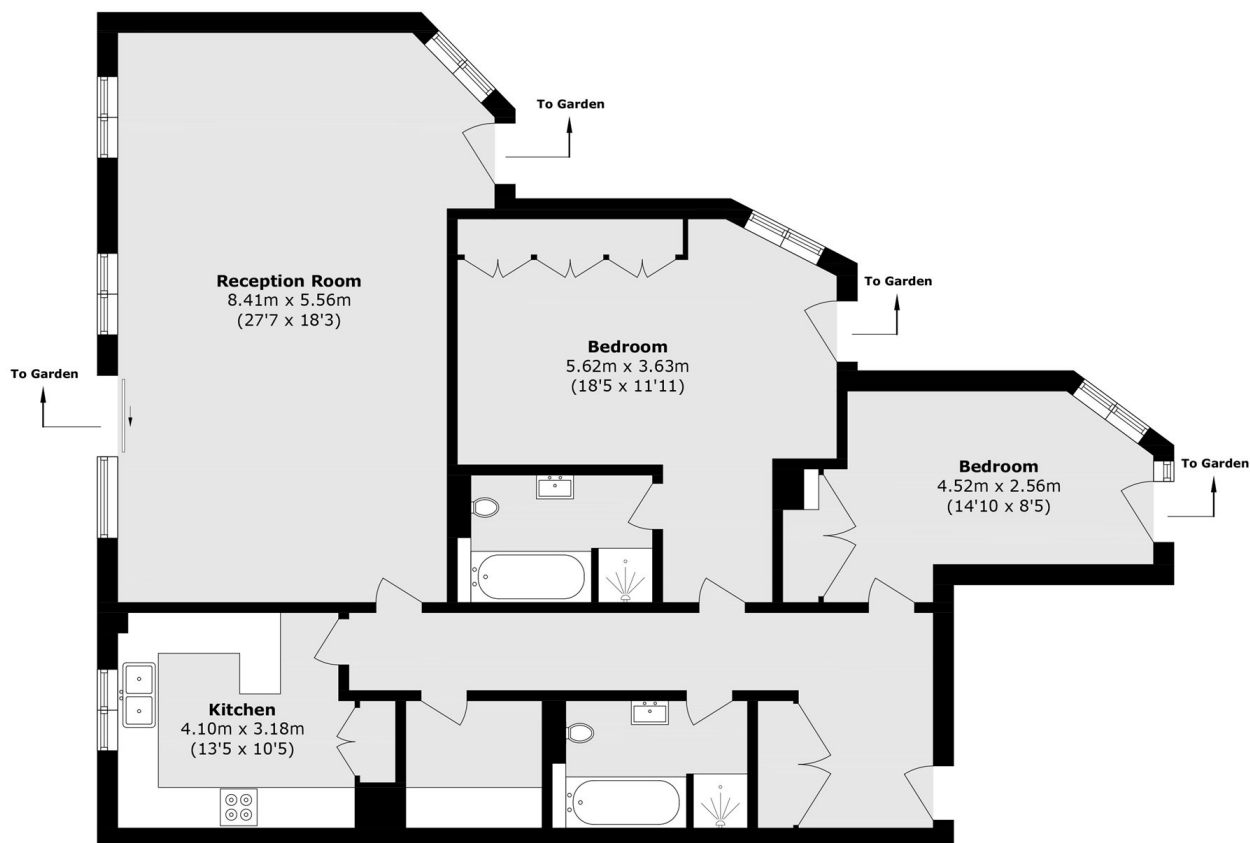
This delightful ground floor apartment provides spacious accommodation in a secure setting of just five luxury homes.

The impressive entrance hallway has generous storage and gives access to all rooms.

The exceptionally large reception room overlooks the rear and has direct entry to the terrace and communal gardens. There is a luxurious Poggenpohl kitchen with breakfast bar, separate utility room and generous storage throughout.



Aylmer Road, London, N2



Total area (approx.): 126.1 sq. m (1357.3 sq. ft)