



## Parkgate Mews, N6

£2,500 Per calendar month

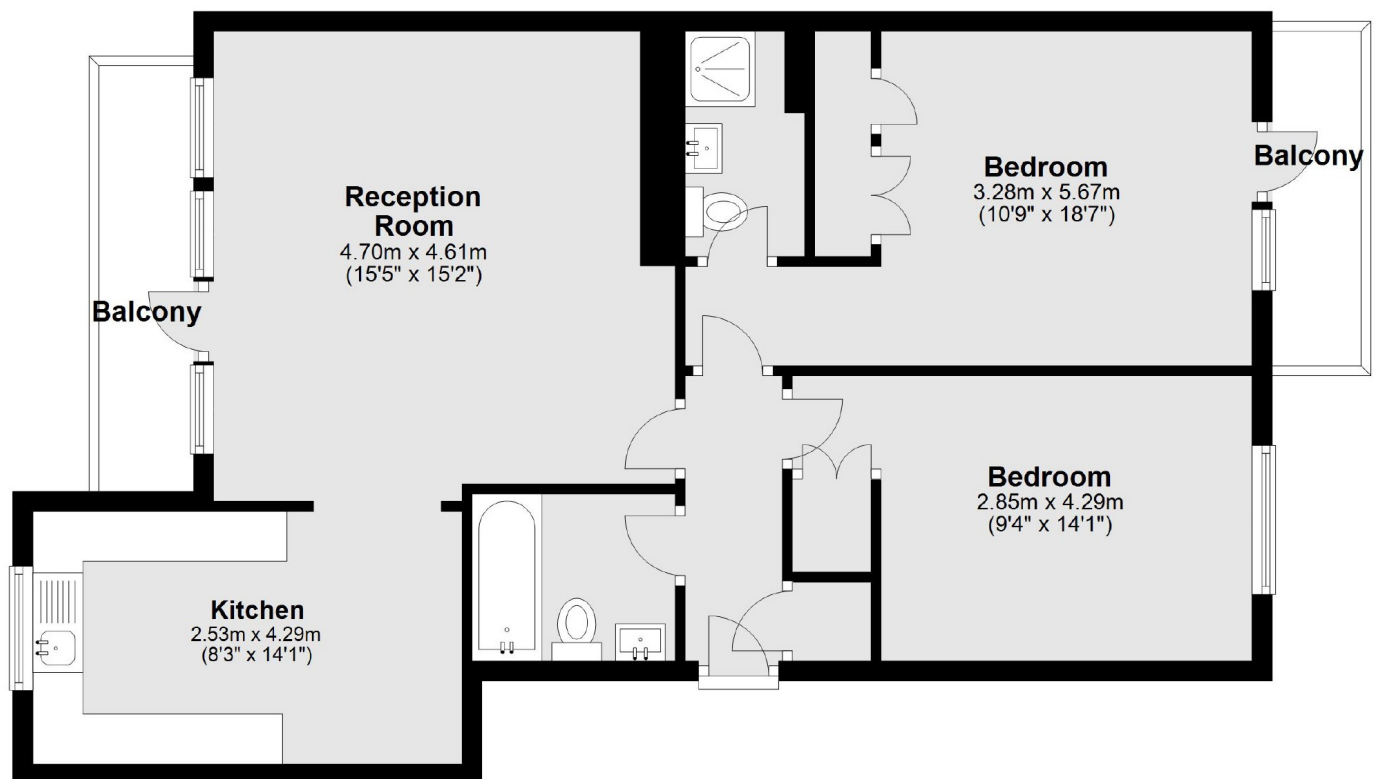
In this small modern purpose built block with a secure gated entrance, an exceptionally well presented two bedroom apartment with passenger lift, modern kitchen and bathrooms.

Positioned within reach of two underground stations, there is a handy bus service and an entrance to Parkland Walk, a scenic environmental trail, ideal for jogging and walking.

### Features

- Two Bedrooms
- Reception With Balcony
- Modern Kitchen
- En Suite Shower Room
- Bathroom
- Secure Parking

# Parkgate Mews, London, N6



Main area: Approx. 72.5 sq. metres (780.0 sq. feet)  
Plus balconies, approx. 3.3 sq. metres (35.6 sq. feet)

## Dexters

Highgate  
35A Highgate High Street  
London  
N6 5JT  
Lettings  
020 8545 8585

Energy Rating: B. We aim to make our particulars both accurate and reliable. However they are not guaranteed; nor do they form part of an offer or contract. If you require clarification on any points then please contact us, especially if you're traveling some distance to view. Please note that appliances and heating systems have not been tested and therefore no warranties can be given as to their good working order.

 **RICS** | Regulated  
Estate Agent  
and Letting Agent

[dexters.co.uk](http://dexters.co.uk)