



North Hill, N6

£2,249 PCM

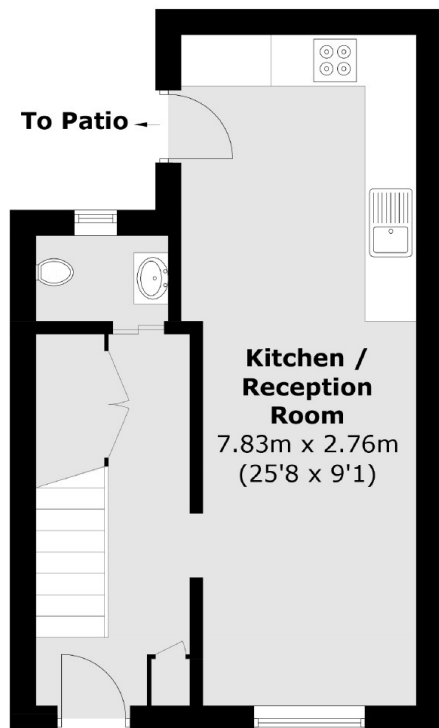
A modern one double bedroom end of terrace house on North Hill. The property features a private patio, open plan kitchen/ reception room with high ceilings and wood floor throughout.

North Hill is well situated for the boutiques and gastro pubs in Highgate Village, Highgate tube station and Hampstead Heath.

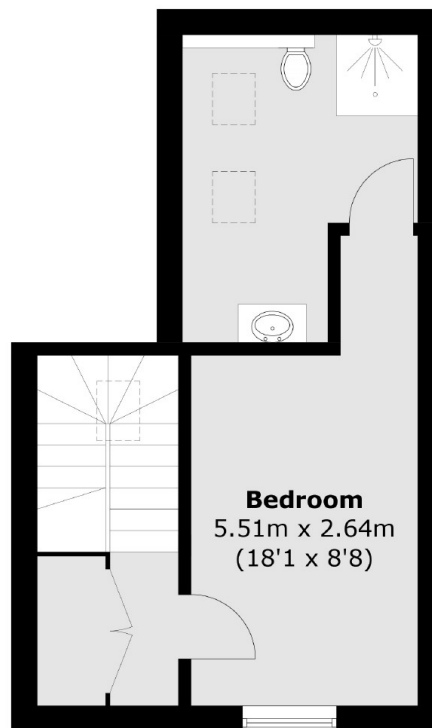
Features

- End Of Terrace House
- One Double Bedroom
- Private Patio
- Open Plan Kitchen
- Modern Interior
- Wood Floor Throughout

North Hill, London, N6



Ground Floor



First Floor

Total area (approx.): 59.8 sq. m (643.6 sq. ft)