



Aylmer Parade, N2

£895,000

A stunning collection of four, newly built townhouses that hugely benefit from A rated energy performance, stylishly equipped through out to a high specification with each having an allocated parking space and roof terrace.

Conveniently located with East Finchley underground station and the High Street less than 0.5 miles away, the green spaces of Hampstead Heath and Highgate Woods along with Highgate primary school are close by.

Features

- Three Bedrooms
- Open Plan Kitchen
- Reception Room
- Three Bathrooms
- Roof Terrace
- Off Street parking

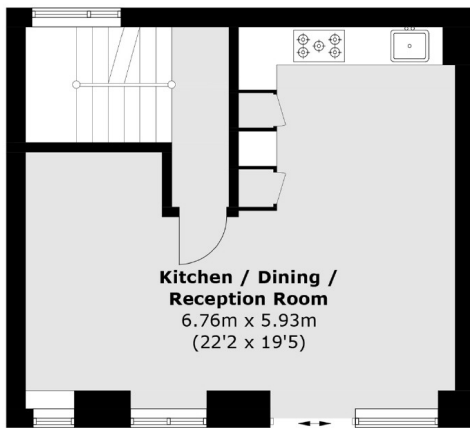


Aylmer Parade, N2

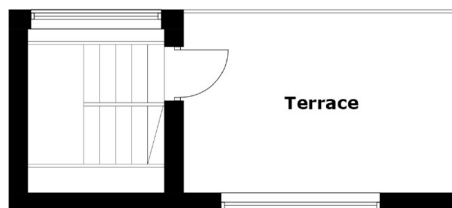
Tucked away on a private road these freehold houses come complete with herringbone wood flooring, air source heat pump Lutron lighting system, under floor heating and secure bike store too.



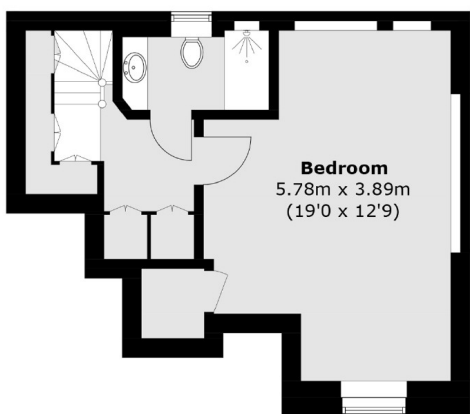
Aylmer Parade, London, N2



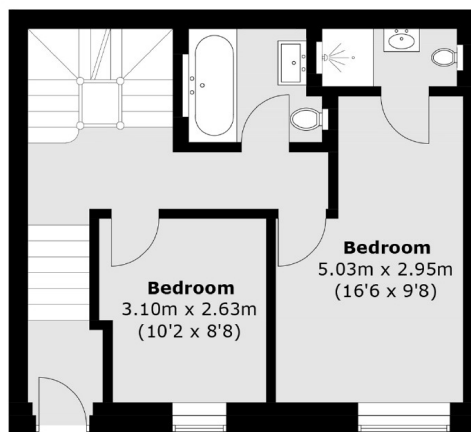
First Floor



Second Floor



Lower Ground Floor



Raised Ground Floor

Total area (approx.): 118.8 sq. m (1,278.7 sq. ft)
Terrace: 12.3 sq. m (132.4 sq. ft)