



## Crouch End Hill, N8

£1,950 Per calendar month

A newly built one bedroom flat on the top floor of this impressive purpose built block in Crouch End. The property has an open plan kitchen, reception, double bedroom with great storage and a modern bathroom. The property benefits from a private balcony with outstanding views.

Excellent location on Crouch End Hill which has a selection of restaurants, local independent shops and supermarkets.

### Features

- One Double Bedroom
- Modern Open Plan Kitchen
- Wood Floors in Reception Room
- Private Balcony
- Crouch End

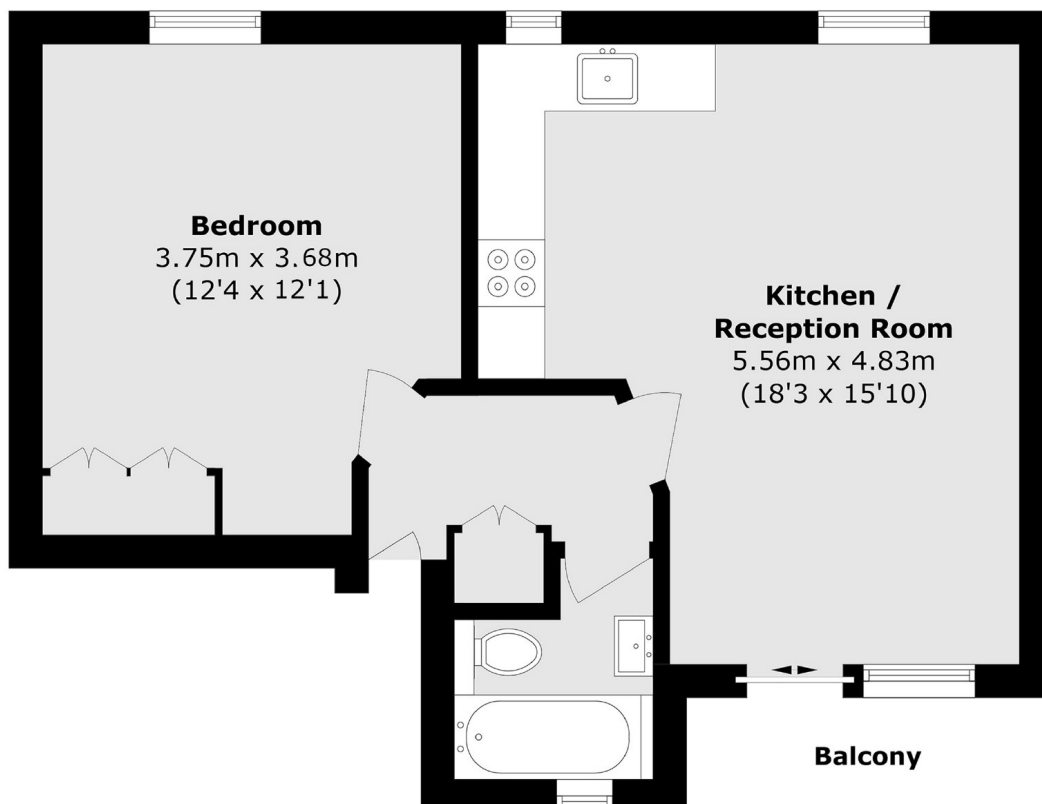


**Crouch End Hill, N8**





# Crouch End Hill, London, N8



Total area (approx.): 46.5 sq. m (500.5 sq. ft)

Balcony area (approx.): 3.6 sq. m (38.8 sq. ft)